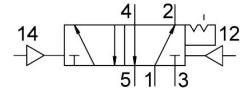


Pneumatic valve VUWS-LT20-B52-N18

Part number: 577535

FESTO



[PDF](#) General operating condition

Data sheet

Feature	Value
Valve function	5/2, bistable
Actuation type	Pneumatic
Valve size	21 mm
Normal nominal flow rate (normalized to DIN 1343)	500 l/min
Pneumatic working port	1/8 NPT
Operating pressure	0.15 MPa ... 1 MPa
Operating pressure	1.5 bar ... 10 bar
Structural design	Plate seat
Certification	c UL us - Recognized (OL)
Nominal width	5 mm
Exhaust air function	With flow control option
Sealing principle	Soft
Mounting position	Any
Manual override	None
Type of control	Direct
Pilot air supply port	Internal
Flow direction	Non-reversible
Symbol	00995840
Lap	Underlap
Pilot pressure MPa	0.15 MPa ... 1 MPa
Pilot pressure	1.5 bar ... 10 bar
Changeover time	4 ms
Explosion prevention and protection	Observe the information on the certificate Zone 1 (ATEX) Zone 2 (ATEX) Zone 21 (ATEX) Zone 22 (ATEX)
Operating medium	Compressed air as per ISO 8573-1:2010 [7:4:4]
Information on operating and pilot media	Operation with oil lubrication possible (required for further use)
Vibration resistance	Transport application test with severity level 2 as per FN 942017-4 and EN 60068-2-6
Shock resistance	Shock test with severity level 2 as per FN 942017-5 and EN 60068-2-27
Corrosion resistance class (CRC)	2 - Moderate corrosion stress
LABS (PWIS) conformity	VDMA24364-B1/B2-L
Cleanroom suitability, measured according to ISO 14644-14	Class 6 according to ISO 14644-1
Temperature of medium	-10 °C ... 60 °C
Pilot medium	Compressed air as per ISO 8573-1:2010 [7:4:4]

Feature	Value
Ambient temperature	-10 °C ... 60 °C
Product weight	156 g
Type of mounting	On terminal strip With through-hole
Venting hole connection	Not ducted
Pilot air port 12	10-32 UNF-2B
Pilot air port 14	10-32 UNF-2B
Pneumatic connection 1	1/8 NPT
Pneumatic connection 2	1/8 NPT
Pneumatic connection 3	1/8 NPT
Pneumatic connection 4	1/8 NPT
Pneumatic connection 5	1/8 NPT
Note on materials	RoHS-compliant
Seals material	HNBR NBR TPE-U(PU)
Housing material	Painted
Material of screws	Steel, galvanized