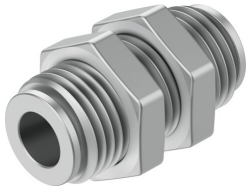


Push-in bulkhead connector NPQH-H-Q8-E-P10

Part number: 578301

FESTO



 General operating condition

Data sheet

Feature	Value
Size	Standard
Nominal width	7 mm
Tubing insertion depth	16 mm
Mounting position	Any
Design	Bulkhead
Pack size	10
Structural design	Push-pull principle
Symbol	00997424
Operating pressure for entire temperature range	-0.095 MPa ... 2 MPa
Operating pressure for entire temperature range	-0.95 bar ... 20 bar
Operating pressure for entire temperature range	-13.775 psi ... 290 psi
Information on operating pressure	Water: max. 0.6 MPa at 0 - 50 °C
Certificate issuing authority	NSF C0523185
Operating medium	Compressed air as per ISO 8573-1:2010 [7:-:-] Water (liquid, ice-free)
Information on operating and pilot media	Operation with oil lubrication possible
Corrosion resistance class (CRC)	3 - High corrosion stress
LABS (PWIS) conformity	VDMA24364-B1/B2-L
Cleanroom suitability, measured according to ISO 14644-14	Class 4 according to ISO 14644-1
For use in the food industry	See declaration of conformity NSF/ANSI 169
Ambient temperature	0 °C ... 150 °C
Product weight	40.6 g
Type of mounting	External hexagon, AF 20
Pneumatic connection 1	for pneumatic tubing outside diameter 8 mm
Pneumatic connection 2	for pneumatic tubing outside diameter 8 mm
Releasing ring color	Silver
Note on materials	RoHS-compliant
Housing material	Brass, chemically nickel-plated
Guard ring material	PEI
Releasing ring material	Brass, chemically nickel-plated
Nut material	Brass, chemically nickel-plated
Material of tubing seal	FPM
Material of tube retaining claw	High-alloy stainless steel
Thrust ring material	PEI