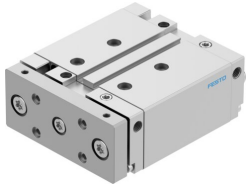


Guided drive DFM-40-50-B-PPV-A-GF

Part number: 595646

FESTO



 General operating condition

Data sheet

| Feature | Value |
|---|--|
| Stroke | 50 mm |
| Piston diameter | 40 mm |
| Drive unit operating mode | Yoke |
| Cushioning | Pneumatic cushioning, adjustable at both ends |
| Mounting position | Any |
| Guide | Sliding guide |
| Structural design | Guide |
| Position sensing | For proximity sensor |
| Operating pressure | 0.15 MPa ... 1 MPa |
| Mode of operation | Double-acting |
| Operating medium | Compressed air as per ISO 8573-1:2010 [7:4:4] |
| Information on operating and pilot media | Operation with oil lubrication possible (required for further use) |
| Corrosion resistance class (CRC) | 2 - Moderate corrosion stress |
| LABS (PWIS) conformity | VDMA24364-B1/B2-L |
| Cleanroom suitability, measured according to ISO 14644-14 | Class 6 according to ISO 14644-1 |
| Ambient temperature | -20 °C ... 80 °C |
| Impact energy in the end positions | 0.7 J |
| Theoretical force at 6 bar, retracting | 686 N |
| Theoretical force at 6 bar, advancing | 754 N |
| Alternative connections | See product drawing |
| Pneumatic connection | G1/8 |
| Cover material | Wrought aluminum alloy |
| Seals material | NBR |
| Housing material | Wrought aluminum alloy |
| Piston rod material | High-alloy stainless steel |