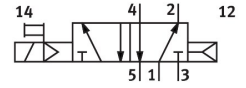
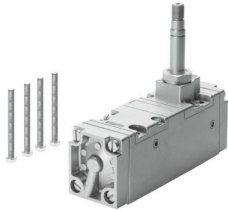


Air solenoid valve CM-5/2-1/4-CH

FESTO

Part number: 5960



[PDF General operating condition](#)

Data sheet

| Feature | Value |
|---|--|
| Valve function | 5/2, monostable |
| Actuation type | Electrical |
| Normal nominal flow rate (normalized to DIN 1343) | 1400 l/min |
| Pneumatic working port | Sub-base |
| Operating pressure | 1.5 bar ... 10 bar |
| Reset method | Pneumatic spring |
| Nominal width | 6.5 mm |
| Mounting position | Any |
| Manual override | Non-detenting |
| Type of control | Pilot-controlled |
| Symbol | 00991049 |
| Max. switching frequency | 40 Hz |
| On switching time | 28 ms |
| Operating medium | Compressed air as per ISO 8573-1:2010 [7:4:4] |
| Information on operating and pilot media | Operation with oil lubrication possible (required for further use) |
| LABS (PWIS) conformity | VDMA24364 zone III |
| Temperature of medium | -10 °C ... 60 °C |
| Type of mounting | On sub-base |
| Pilot air port 12 | G1/8 |
| Pilot air port 14 | G1/8 |
| Pneumatic connection 1 | G1/4 |
| Pneumatic connection 2 | G1/4 |
| Pneumatic connection 3 | G1/4 |
| Pneumatic connection 4 | G1/4 |
| Pneumatic connection 5 | G1/4 |
| Seals material | NBR |
| Housing material | Wrought aluminum alloy |
| Diaphragm material | PUR |