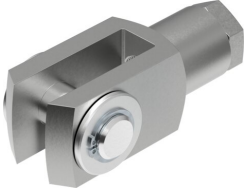


Rod clevis SG-M20X1,5

Part number: 6147

FESTO



 [General operating condition](#)

Data sheet

Feature	Value
Size	M20x1.5
Conforms to standard	ISO 8140
Threaded connection	Internal thread M20x1.5
Corrosion resistance class (CRC)	1 - Low corrosion stress
LABS (PWIS) conformity	VDMA24364-B2-L
Suitability for the production of Li-ion batteries	Metals with more than 1% by mass of copper are excluded from use. Circuit boards, lines, electrical push-in connectors and coils are excluded
Ambient temperature	-40 °C ... 150 °C
Max. load capacity	9 kN
Product weight	793 g
Note on materials	RoHS-compliant
Bolt material	Steel Galvanized
Clevis material	Steel Galvanized
Nut material	Steel Galvanized