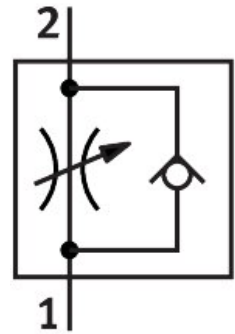


One-way flow control valve GR-3/8-B

Part number: 6308

FESTO



[General operating condition](#)

Data sheet

Feature	Value
Valve function	Flow control non-return function
Pneumatic connection 1	Internal thread G3/8
Pneumatic connection 2	Internal thread G3/8
Adjusting element	Knurled screw
Type of mounting	With through-hole
Standard nominal flow rate in flow control direction	1010 l/min
Standard nominal flow rate in non-return direction	1150 l/min
Operating pressure	0.01 MPa ... 1 MPa
Operating pressure	0.1 bar ... 10 bar
Operating pressure	1.45 psi ... 145 psi
Ambient temperature	-20 °C ... 75 °C
Housing material	Die-cast zinc
Explosion prevention and protection	Observe the information on the certificate Zone 1 (ATEX) Zone 2 (ATEX) Zone 21 (ATEX) Zone 22 (ATEX)
Mounting position	Any
Symbol	00991453
Operating medium	Compressed air as per ISO 8573-1:2010 [7:4:4]
Information on operating and pilot media	Operation with oil lubrication possible (required for further use)
LABS (PWIS) conformity	VDMA24364-B1/B2-L
Temperature of medium	-20 °C ... 75 °C
Product weight	225 g
Note on materials	RoHS-compliant
Material of adjusting screw	Brass