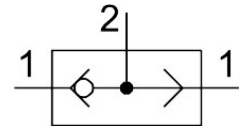


# OR gate OS-1/4-B

Part number: 6682

FESTO



 [General operating condition](#)

## Data sheet

Feature	Value
Valve function	OR function
Pneumatic connection 1	G1/4
Pneumatic connection 2	G1/4
Type of mounting	With through-hole
Normal nominal flow rate (normalized to DIN 1343)	1170 l/min
Operating pressure	1 bar ... 10 bar
Ambient temperature	-10 °C ... 60 °C
Housing material	Wrought aluminum alloy
Operating medium	Compressed air as per ISO 8573-1:2010 [7:-:-]
Nominal width	6.5 mm
Mounting position	Any
Symbol	00991102
Information on operating and pilot media	Operation with oil lubrication possible (required for further use)
LABS (PWIS) conformity	VDMA24364-B1/B2-L
Temperature of medium	-10 °C ... 60 °C
Product weight	110 g
Pneumatic connection 3	G1/4
Note on materials	RoHS-compliant
Seals material	NBR