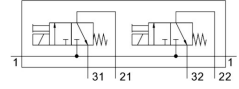
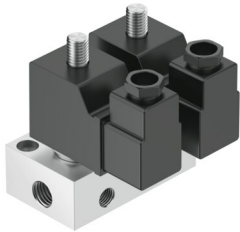


Air solenoid valve BMCH-2-3-1/8

Part number: 6686

FESTO



 General operating condition

Data sheet

Feature	Value
Valve function	2x3/2, closed, monostable
Actuation type	Electrical
Normal nominal flow rate (normalized to DIN 1343)	160 l/min
Pneumatic working port	G1/8
Operating pressure	-0.095 MPa ... 0.7 MPa
Operating pressure	-0.95 bar ... 7 bar
Structural design	Poppet valve with return spring
Reset method	Mechanical spring
Degree of protection	IP65
Nominal width	2.5 mm
Sealing principle	Soft
Max. no. of valve positions	2
Type of control	Direct
Symbol	00995421
Pick-up power consumption	30 W
Holding power consumption	22 W
Operating medium	Compressed air as per ISO 8573-1:2010 [7:4:4]
Information on operating and pilot media	Operation with oil lubrication possible (required for further use)
LABS (PWIS) conformity	VDMA24364-B2-L
Temperature of medium	-10 °C ... 60 °C
Ambient temperature	-5 °C ... 40 °C
Product weight	680 g
Electrical connection	Plug
Type of mounting	With through-hole
Pneumatic connection 1	G1/4
Pneumatic connection 2	G1/8
Pneumatic connection 3	G1/8
Housing material	Aluminum