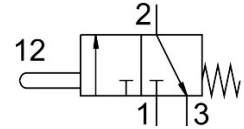


# Stem actuated valve V-3-1/4-B

Part number: 6808

FESTO



General operating condition

## Data sheet

| Feature   | Value  |
|---|--|
| Valve function                                    | 3/2, closed, monostable  |
| Actuation type                                    | Mechanical   |
| Normal nominal flow rate (normalized to DIN 1343) | 600 l/min  |
| Pneumatic working port                            | G1/4   |
| Operating pressure                                | -0.95 bar ... 10 bar   |
| Structural design                                 | Plate seat   |
| Nominal width                                     | 7 mm   |
| Type of control                                   | Direct   |
| Symbol  | 00991095   |
| Explosion prevention and protection               | Zone 1 (ATEX)<br>Zone 2 (ATEX)<br>Zone 21 (ATEX)<br>Zone 22 (ATEX) |
| LABS (PWIS) conformity                            | VDMA24364-B1/B2-L  |
| Ambient temperature                               | -10 °C ... 60 °C   |
| Actuating force                                   | 70 N   |
| Product weight                                    | 130 g  |
| Type of mounting                                  | With through-hole  |
| Pneumatic connection 1                            | G1/4   |
| Pneumatic connection 2                            | G1/4   |
| Pneumatic connection 3                            | G1/4   |
| Seals material                                    | NBR  |
| Housing material                                  | Die-cast aluminum  |