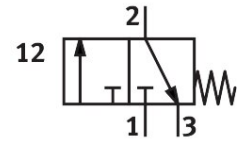


Front panel valve SV-3-M5

Part number: 6817

FESTO



General operating condition

Data sheet

Feature	Value
Valve function	3/2, closed, monostable
Actuation type	Manual
Normal nominal flow rate (normalized to DIN 1343)	65 l/min
Operating pressure	-0.095 MPa ... 0.8 MPa
Operating pressure	-0.95 bar ... 8 bar
Structural design	Poppet valve with return spring
Reset method	Mechanical spring
Nominal width	2 mm
Sealing principle	Soft
Mounting position	Any
Type of control	Direct
Flow direction	Non-reversible
Symbol	00991292
Lap	Overlap
Explosion prevention and protection	Zone 1 (ATEX) Zone 2 (ATEX) Zone 21 (ATEX) Zone 22 (ATEX)
Operating medium	Compressed air as per ISO 8573-1:2010 [7:4:4]
LABS (PWIS) conformity	VDMA24364-B1/B2-L
Ambient temperature	-10 °C ... 60 °C
Actuating force	12 N
Product weight	40 g
Type of mounting	With through-hole
Pneumatic connection 1	M5
Seals material	NBR
Housing material	Polymer Brass