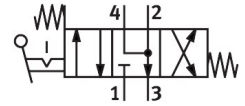


Finger lever valve H-4/3-M5

Part number: 7334

FESTO



[PDF](#) General operating condition

Data sheet

Feature	Value
Valve function	4/3, exhausted
Actuation type	Manual
Normal nominal flow rate (normalized to DIN 1343)	125 l/min
Pneumatic working port	M5
Operating pressure	0 bar ... 8 bar
Reset method	Mechanical spring
Nominal width	4 mm
Sealing principle	Soft
Type of control	Pilot-controlled
Flow direction	Non-reversible
Symbol	00991329
LABS (PWIS) conformity	VDMA24364-B1/B2-L
Pneumatic connection 1	M5
Pneumatic connection 2	M5
Pneumatic connection 3	Not ducted