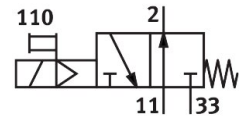
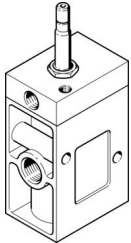


# Air solenoid valve MOCH-3-1/2

Part number: 7885

FESTO



General operating condition

## Data sheet

Feature	Value
Valve function	3/2, open, monostable
Actuation type	Electrical
Width	52 mm
Normal nominal flow rate (normalized to DIN 1343)	3700 l/min
Pneumatic working port	G1/2
Operating voltage	Via solenoid coil, to be ordered separately
Operating pressure	0.15 MPa ... 1 MPa
Operating pressure	1.5 bar ... 10 bar
Structural design	Plate seat
Reset method	Mechanical spring
Degree of protection	IP65
Nominal width	14 mm
Width dimension	69 mm
Exhaust air function	With flow control option
Sealing principle	Soft
Mounting position	Any
Manual override	Detenting
Type of control	Pilot-controlled
Flow direction	Non-reversible
Symbol	00991017
Lap	Underlap
b-value	0.3
Switching time off	54 ms
On switching time	22 ms
Max. positive test pulse with 0 signal	2200 µs
Max. negative test pulse on 1 signal	3700 µs
Coil characteristics	See solenoid coil, to be ordered separately
Operating medium	Compressed air as per ISO 8573-1:2010 [7:4:4]
Information on operating and pilot media	Operation with oil lubrication possible (required for further use)
Corrosion resistance class (CRC)	1 - Low corrosion stress
LABS (PWIS) conformity	VDMA24364-B1/B2-L
Storage temperature	-20 °C ... 60 °C
Temperature of medium	-10 °C ... 60 °C
Ambient temperature	-5 °C ... 40 °C
Product weight	1150 g

<b>Feature</b>	<b>Value</b>
Type of mounting	On terminal strip With through-hole
Pneumatic connection 1	G1/2
Pneumatic connection 2	G1/2
Pneumatic connection 3	G1/2
Note on materials	RoHS-compliant
Seals material	NBR
Housing material	Die-cast aluminum