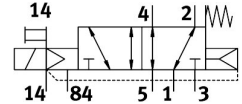
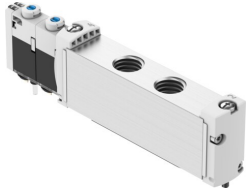


# Air solenoid valve VUVG-S18-M52-RZT-G14-1T1L

FESTO

Part number: 8004879



[General operating condition](#)

## Data sheet

Feature	Value
Valve function	5/2-way, monostable
Actuation type	Electrical
Valve size	18 mm
Normal nominal flow rate (normalized to DIN 1343)	1150 l/min
Pneumatic working port	G1/4
Operating voltage	24V DC
Operating pressure	-0.09 MPa ... 1 MPa
Operating pressure	-0.9 bar ... 10 bar
Structural design	Piston gate valve
Reset method	Mechanical spring Pneumatic spring
Certification	c UL us - recognized (OL)
Degree of protection	IP65 IP67
Exhaust air function	Adjustable
Sealing principle	Soft
Mounting position	Any
Manual override	Detenting Non-detenting
Type of control	Piloted
Pilot air supply port	External
Flow direction	Reversible
Symbol	00992849
Lap	Indeterminate overlap
Signal status display	LED
Pilot pressure MPa	0.15 MPa ... 0.8 MPa
Pilot pressure	1.5 bar ... 8 bar
Max. switching frequency	3 Hz
Switching time off	35 ms
On switching time	20 ms
Duty cycle	100%
Max. positive test pulse with 0 signal	1600 µs
Max. negative test pulse on 1 signal	3000 µs
Coil characteristics	22 V DC: 1.0 W
Permissible voltage fluctuations	+/- 10%
Operating medium	Compressed air as per ISO 8573-1:2010 [7:4:4]

<b>Feature</b>	<b>Value</b>
Information on operating and pilot media	Operation with oil lubrication possible (required for further use)
Vibration resistance	Transport application test with severity level 2 as per FN 942017-4 and EN 60068-2-6
Shock resistance	Shock test with severity level 2 as per FN 942017-5 and EN 60068-2-27
Corrosion resistance class (CRC)	2 - Moderate corrosion stress
LABS (PWIS) conformity	VDMA24364-B1/B2-L
Temperature of medium	-5 °C ... 60 °C
Pilot medium	Compressed air as per ISO 8573-1:2010 [7:4:4]
Ambient temperature	-5 °C ... 60 °C
Product weight	138 g
Electrical connection	Via sub-base
Type of mounting	On terminal strip
Pneumatic connection 2	G1/4
Pneumatic connection 4	G1/4
Note on materials	RoHS compliant
Seals material	HNBR NBR
Housing material	Wrought aluminum alloy