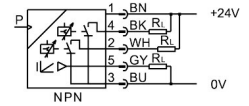


Pressure sensor SPAW-P10R-G14F-2NA-M12

Part number: 8022816

FESTO



[General operating condition](#)

Data sheet

Feature	Value
Symbol	00995379
Certification	RCM compliance mark c UL us - Listed (OL)
CE marking (see declaration of conformity)	As per EU EMC directive As per EU RoHS directive
UKCA marking (see declaration of conformity)	To UK RoHS instructions
Note on materials	RoHS-compliant
Measured variable	Relative pressure
Method of measurement	Metal thin-film pressure sensor
Pressure measuring range initial value	0 MPa
Pressure measuring range initial value	0 bar
Pressure measuring range initial value	0 psi
Pressure measuring range end value	1 MPa
Pressure measuring range end value	10 bar
Pressure measuring range end value	145 psi
Overload pressure	2 MPa
Overload pressure	20 bar
Overload pressure	290 psi
Operating medium	Liquid media Gaseous media
Temperature of medium	-20 °C ... 85 °C
Ambient temperature	0 °C ... 80 °C
Accuracy in ± % FS	1 %FS
Repetition accuracy in ± %FS	0.15 %FS
Switching output	2xNPN
Switching function	Freely programmable
Switching element function	Switchable
Max. output current	250 mA
Analog output	4 - 20 mA
Rise time	3 ms
Short-circuit protection	yes
DC operating voltage range	15 V ... 35 V
Reverse polarity protection	for operating voltage
Electrical connection 1, connection type	Plug
Electrical connection 1, connection technology	M12x1 A-coded as per EN 61076-2-101
Electrical connection 1, number of pins/wires	5

Feature	Value
Electrical connection 1, type of mounting	Screw-type lock not rotatable
Electrical connection 1, type of mounting	Compatible with rotatable screw-type lock
Electrical connection for input 1, connection pattern	00995383
Type of mounting	With internal thread With accessories
Mounting position	Any
Pneumatic connection	Internal thread G1/4
Product weight	230 g
Housing material	ABS High-alloy stainless steel
Materials in contact with the media	High-alloy stainless steel
Display type	4-character alphanumeric LED display
Displayable unit(s)	MPa bar kPa kg/cm ² psi
Switching status indication	LED red
Setting options	Via display and pushbuttons
Protection against tampering	PIN code
Setting range threshold value	0.5 % ... 100 %
Setting range hysteresis	0.5 % ... 99.5 %
Degree of protection	IP65 IP67
Corrosion resistance class (CRC)	4 - Particularly high corrosion stress
LABS (PWIS) conformity	VDMA24364 zone III