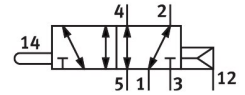
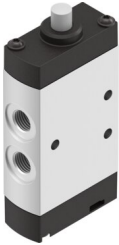


Stem actuated valve VMEF-S-M52-E-N18

Part number: 8031309

FESTO



 [General operating condition](#)

Data sheet

| Feature | Value |
|---|--|
| Valve function | 5/2, monostable |
| Actuation type | Mechanical |
| Width | 20 mm |
| Normal nominal flow rate (normalized to DIN 1343) | 750 l/min |
| Pneumatic working port | 1/8 NPT |
| Operating pressure | -0.095 MPa ... 1 MPa |
| Operating pressure | -0.95 bar ... 10 bar |
| Structural design | Piston gate valve |
| Reset method | Pneumatic spring |
| Nominal width | 5.2 mm |
| Application note | Do not use as mechanical stop |
| Sealing principle | Soft |
| Mounting position | Any |
| Type of control | Direct |
| Flow direction | Reversible |
| Symbol | 00992217 |
| Lap | Overlap |
| Max. switching frequency | 3 Hz |
| Explosion prevention and protection | Zone 1 (ATEX) Zone 2 (ATEX) Zone 21 (ATEX) Zone 22 (ATEX) |
| Operating medium | Compressed air as per ISO 8573-1:2010 [7:-:-] |
| Information on operating and pilot media | Operation with oil lubrication possible (required for further use) |
| Corrosion resistance class (CRC) | 2 - Moderate corrosion stress |
| LABS (PWIS) conformity | VDMA24364-B1/B2-L |
| Temperature of medium | -10 °C ... 60 °C |
| Ambient temperature | -10 °C ... 60 °C |
| Actuating force | 28 N |
| Product weight | 144 g |
| Type of mounting | With through-hole |
| Pilot air port 12/14 | M5 |
| Pneumatic connection 1 | 1/8 NPT |
| Pneumatic connection 2 | 1/8 NPT |
| Pneumatic connection 3 | 1/8 NPT |
| Pneumatic connection 4 | 1/8 NPT |

| Feature | Value |
|------------------------|----------------------------------|
| Pneumatic connection 5 | 1/8 NPT |
| Note on materials | RoHS-compliant |
| Cover material | PA-reinforced |
| Seals material | NBR |
| Housing material | Wrought aluminum alloy, anodized |