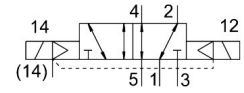


# Air solenoid valve VSVA-B-B52-Z-D1-1T1L

Part number: 8034836

FESTO



 General operating condition

## Data sheet

| Feature                                                                 | Value                                                                     |
|-------------------------------------------------------------------------|---------------------------------------------------------------------------|
| Valve function                                                          | 5/2, bistable                                                             |
| Actuation type                                                          | Electrical                                                                |
| Width                                                                   | 42 mm                                                                     |
| Normal nominal flow rate (normalized to DIN 1343)                       | 1300 l/min                                                                |
| Pneumatic working port                                                  | Sub-base, size 1 as per ISO 5599-2<br>G3/8                                |
| Operating voltage                                                       | 24V DC                                                                    |
| Operating pressure                                                      | -0.09 MPa ... 1 MPa                                                       |
| Operating pressure                                                      | -0.9 bar ... 10 bar                                                       |
| Structural design                                                       | Piston gate valve                                                         |
| Certification                                                           | c UL us - Recognized (OL)                                                 |
| Degree of protection                                                    | IP65<br>NEMA 4                                                            |
| Exhaust air function                                                    | With flow control option<br>Via throttle plate<br>Via individual sub-base |
| Sealing principle                                                       | Soft                                                                      |
| Mounting position                                                       | Any                                                                       |
| Manual override                                                         | Covered                                                                   |
| Type of control                                                         | Pilot-controlled                                                          |
| Pilot air supply port                                                   | External                                                                  |
| Flow direction                                                          | Any                                                                       |
| Symbol                                                                  | 00992990                                                                  |
| Signal status display                                                   | LED                                                                       |
| Pilot pressure MPa                                                      | 0.3 MPa ... 1 MPa                                                         |
| Pilot pressure                                                          | 3 bar ... 10 bar                                                          |
| Flow rate of pneumatic valve                                            | 1800 l/min                                                                |
| Flow rate of pneumatic valve on individual sub-base                     | 1500 l/min                                                                |
| Optimized flow rate of pneumatic valve, pneumatically concatenated flow | 1860 l/min                                                                |
| Optimized flow rate of pneumatic valve pneumatically concatenated flow  | 1300 l/min                                                                |
| Changeover time                                                         | 16 ms                                                                     |
| Max. positive test pulse with 0 signal                                  | 1400 µs                                                                   |
| Max. negative test pulse on 1 signal                                    | 900 µs                                                                    |
| Nominal pick-up current per solenoid coil                               | 72 mA to 30 ms                                                            |
| Coil characteristics                                                    | 24 V DC: 1.6 W                                                            |
| Surge resistance                                                        | 2.5 kV                                                                    |

| Feature                                  | Value                                                                                |
|------------------------------------------|--------------------------------------------------------------------------------------|
| Contamination level                      | 3                                                                                    |
| Permissible voltage fluctuations         | +/- 10 %                                                                             |
| Operating medium                         | Compressed air as per ISO 8573-1:2010 [7:4:4]                                        |
| Information on operating and pilot media | Operation with oil lubrication possible (required for further use)                   |
| Vibration resistance                     | Transport application test with severity level 2 as per FN 942017-4 and EN 60068-2-6 |
| Shock resistance                         | Shock test with severity level 2 as per FN 942017-5 and EN 60068-2-27                |
| Corrosion resistance class (CRC)         | 0 - No corrosion stress                                                              |
| LABS (PWIS) conformity                   | VDMA24364-B1/B2-L                                                                    |
| Relative air humidity                    | 0 - 90 %                                                                             |
| Ambient temperature                      | -5 °C ... 50 °C                                                                      |
| Product weight                           | 439 g                                                                                |
| Electrical connection                    | Plug-in<br>as per ISO 5599-2                                                         |
| Type of mounting                         | On sub-base                                                                          |
| Pilot air port 12/14                     | Sub-base, size 1 as per ISO 5599-2                                                   |
| Pilot exhaust air port 82/84             | Ducted<br>Not ducted as per standard<br>Optionally:                                  |
| Pneumatic connection 1                   | Sub-base, size 1 as per ISO 5599-2                                                   |
| Pneumatic connection 2                   | Sub-base, size 1 as per ISO 5599-2                                                   |
| Pneumatic connection 3                   | Sub-base, size 1 as per ISO 5599-2                                                   |
| Pneumatic connection 4                   | Sub-base, size 1 as per ISO 5599-2                                                   |
| Pneumatic connection 5                   | Sub-base, size 1 as per ISO 5599-2                                                   |
| Note on materials                        | RoHS-compliant                                                                       |
| Seals material                           | FPM<br>HNBR<br>NBR                                                                   |
| Housing material                         | Die-cast aluminum<br>PA                                                              |
| Material of screws                       | Steel, galvanized                                                                    |