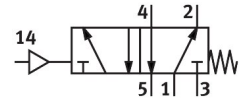


Pneumatic valve VUWS-LT25-M52-M-N14

Part number: 8035221

FESTO



[General operating condition](#)

Data sheet

Feature	Value
Valve function	5/2-way, monostable
Actuation type	Pneumatic
Valve size	26.5 mm
Normal nominal flow rate (normalized to DIN 1343)	1000 l/min
Pneumatic working port	1/4 NPT
Operating pressure	0.25 MPa ... 1 MPa
Operating pressure	2.5 bar ... 10 bar
Structural design	Plate seat
Reset method	Mechanical spring
Certification	c UL us - recognized (OL)
Nominal width	6.6 mm
Exhaust air function	Adjustable
Sealing principle	Soft
Mounting position	Any
Manual override	None
Type of control	directly
Pilot air supply port	Internal
Flow direction	Non-reversible
Symbol	00991001
Lap	Negative overlap
Pilot pressure MPa	0.25 MPa ... 1 MPa
Pilot pressure	2.5 bar ... 10 bar
Switching time off	23 ms
On switching time	8 ms
Operating medium	Compressed air as per ISO 8573-1:2010 [7:4:4]
Information on operating and pilot media	Operation with oil lubrication possible (required for further use)
Vibration resistance	Transport application test with severity level 2 as per FN 942017-4 and EN 60068-2-6
Shock resistance	Shock test with severity level 2 as per FN 942017-5 and EN 60068-2-27
Corrosion resistance class (CRC)	2 - Moderate corrosion stress
LABS (PWIS) conformity	VDMA24364-B1/B2-L
Cleanroom suitability, measured according to ISO 14644-14	Class 6 according to ISO 14644-1
Temperature of medium	-10 °C ... 60 °C
Pilot medium	Compressed air as per ISO 8573-1:2010 [7:4:4]
Ambient temperature	-10 °C ... 60 °C
Product weight	290 g

Feature	Value
Type of mounting	On terminal strip With through-hole
Venting hole connection	Not ducted
Pilot air port 14	10-32 UNF-2B
Pneumatic connection 1	1/4 NPT
Pneumatic connection 2	1/4 NPT
Pneumatic connection 3	1/4 NPT
Pneumatic connection 4	1/4 NPT
Pneumatic connection 5	1/4 NPT
Note on materials	RoHS compliant
Seals material	HNBR NBR TPE-U(PU)
Housing material	Painted
Material of screws	Galvanized steel