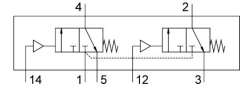


Pneumatic valve VUWS-LT30-T32C-M-N38

Part number: 8036730

FESTO



General operating condition

Data sheet

Feature	Value
Valve function	2x3/2, closed, monostable
Actuation type	Pneumatic
Valve size	31 mm
Normal nominal flow rate (normalized to DIN 1343)	1600 l/min
Pneumatic working port	3/8 NPT
Operating pressure	0.1 MPa ... 1 MPa
Operating pressure	1 bar ... 10 bar
Structural design	Plate seat
Reset method	Mechanical spring
Certification	c UL us - Recognized (OL)
Nominal width	7.9 mm
Exhaust air function	With flow control option
Sealing principle	Soft
Mounting position	Any
Manual override	None
Type of control	Direct
Pilot air supply port	Internal
Flow direction	Non-reversible
Symbol	00995852
Lap	Underlap
Pilot pressure MPa	0.25 MPa ... 1 MPa
Pilot pressure	2.5 bar ... 10 bar
Switching time off	37 ms
On switching time	12 ms
Explosion prevention and protection	Observe the information on the certificate Zone 1 (ATEX) Zone 2 (ATEX) Zone 21 (ATEX) Zone 22 (ATEX)
Operating medium	Compressed air as per ISO 8573-1:2010 [7:4:4]
Information on operating and pilot media	Operation with oil lubrication possible (required for further use)
Corrosion resistance class (CRC)	2 - Moderate corrosion stress
LABS (PWIS) conformity	VDMA24364-B1/B2-L
Cleanroom suitability, measured according to ISO 14644-14	Class 6 according to ISO 14644-1
Temperature of medium	-10 °C ... 60 °C
Pilot medium	Compressed air as per ISO 8573-1:2010 [7:4:4]
Ambient temperature	-10 °C ... 60 °C

Feature	Value
Product weight	515 g
Type of mounting	On terminal strip With through-hole
Venting hole connection	Not ducted
Pilot air port 12	1/8 NPT
Pilot air port 14	1/8 NPT
Pneumatic connection 1	3/8 NPT
Pneumatic connection 2	3/8 NPT
Pneumatic connection 3	3/8 NPT
Pneumatic connection 4	3/8 NPT
Pneumatic connection 5	3/8 NPT
Note on materials	RoHS-compliant
Seals material	HNBR NBR TPE-U(PU)
Housing material	Die cast aluminum, painted
Piston slide material	POM
Material of screws	Steel, galvanized