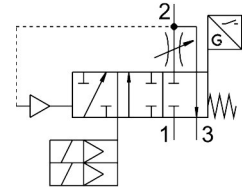


Soft start/quick exhaust valve MS6-SV-1/2-D-10V24-20E-SO-AG

Part number: 8038492

FESTO



[PDF General operating condition](#)

Data sheet

| Feature | Value |
|---|--|
| Series | MS |
| Size | 6 |
| Width dimension | 62 mm |
| Safety function | Exhausting Prevention of unexpected start-up (pressurization) |
| Safety integrity level (SIL) | Exhaust/SIL 3 Avoidance of unexpected start-up (pressurization)/SIL 3 |
| Performance Level (PL) | Exhaust/category 3, performance level d Avoidance of unexpected start-up (pressurization)/category 3, performance level d |
| Note on forced dynamization | Switching frequency at least once a month |
| Structural design | Piston seat |
| Lap | Underlap |
| Actuation type | Electrical |
| Pilot air supply port | Internal |
| Sealing principle | Soft |
| Exhaust air function | Without flow control option |
| Position sensing principle | Piston magnet principle |
| Conforms to standard | DIN EN ISO 13849-1 DIN EN ISO 13849-2 |
| Manual override | None |
| Reset method | Mechanical spring |
| Type of control | Pilot-controlled |
| Symbol | 00995704 |
| Valve function | 3/2, closed, monostable Pressure build-up function |
| Operating pressure | 0.35 MPa ... 1 MPa |
| Operating pressure | 3.5 bar ... 10 bar |
| Pressure gauge | with pressure gauge |
| C value | 19.3 l/sbar |
| b-value | 0.21 |
| Normal nominal flow rate (normalized to DIN 1343) | 4300 l/min |
| Standard flow rate exhaust 6-> 0 bar | 9000 l/min |
| Max. switching frequency | 0.5 Hz |
| Switching time off | 40 ms |
| On switching time | 130 ms |

| Feature | Value |
|--|--|
| Duty cycle | 100% |
| Signal status display | LED Switching outputs |
| Coil characteristics | 24 V DC: 1.8 W |
| Nominal operating voltage DC | 24 V |
| Permissible voltage fluctuations | +10 %/-15 % |
| Operating medium | Compressed air as per ISO 8573-1:2010 [7:4:4] |
| Information on operating and pilot media | Operation with oil lubrication possible (required for further use) |
| Corrosion resistance class (CRC) | 2 - Moderate corrosion stress |
| Note on materials | RoHS-compliant |
| LABS (PWIS) conformity | VDMA24364-B1/B2-L |
| Noise level | 75 dB(A) |
| Degree of protection | IP65 With plug socket |
| Temperature of medium | -10 °C ... 50 °C |
| Ambient temperature | -10 °C ... 50 °C |
| Storage temperature | -10 °C ... 50 °C |
| Shock resistance | Shock test with severity level 2 as per FN 942017-5 and EN 60068-2-27 |
| Vibration resistance | Transport application test with severity level 2 as per FN 942017-4 and EN 60068-2-6 |
| Certification | RCM compliance mark |
| KC characters | KC EMC |
| CE marking (see declaration of conformity) | As per EU EMC directive as per EU machinery directive As per EU RoHS directive |
| UKCA marking (see declaration of conformity) | To UK instructions for machines To UK RoHS instructions |
| Type of mounting | Optionally: Line installation With accessories |
| Mounting position | Any |
| Product weight | 1900 g |
| Pneumatic connection 1 | G1/2 |
| Pneumatic connection 2 | G1/2 |
| Pneumatic connection 3 | G1 |
| Electrical connection | 2-pin 2x plugs Form C as per EN 175301-803 |
| Electrical connection, proximity sensor | 2x cables 3-wire |
| Housing material | Die-cast aluminum |
| Seals material | NBR |
| Piston rod material | High-alloy stainless steel |