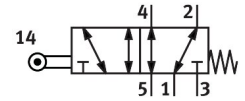


Roller lever valve VMEF-R-M52-M-G14

Part number: 8047094

FESTO



[General operating condition](#)

Data sheet

Feature	Value
Valve function	5/2, monostable
Actuation type	Mechanical
Width	20 mm
Normal nominal flow rate (normalized to DIN 1343)	1200 l/min
Pneumatic working port	G1/4
Operating pressure	-0.095 MPa ... 1 MPa
Operating pressure	-0.95 bar ... 10 bar
Structural design	Piston gate valve Roller lever
Reset method	Mechanical spring
Max. stroke limit (hard)	11.6 mm
Nominal width	7 mm
Application note	Risk of pinching
Sealing principle	Soft
Mounting position	Any
Type of control	Direct
Flow direction	Reversible
Symbol	00991362
Lap	Overlap
Max. actuating speed with lateral actuation	1.4 m/s
Max. switching frequency	3 Hz
Cam angle	30 deg
Explosion prevention and protection	Zone 1 (ATEX) Zone 2 (ATEX) Zone 21 (ATEX) Zone 22 (ATEX)
Operating medium	Compressed air as per ISO 8573-1:2010 [7:-:-]
Information on operating and pilot media	Operation with oil lubrication possible (required for further use)
Corrosion resistance class (CRC)	1 - Low corrosion stress
LABS (PWIS) conformity	VDMA24364-B1/B2-L
Temperature of medium	-10 °C ... 60 °C
Ambient temperature	-10 °C ... 60 °C
Note on ambient temperature	Influence of heat on wear
Actuating force	38 N
Product weight	272 g
Type of mounting	With through-hole
Pneumatic connection 1	G1/4

Feature	Value
Pneumatic connection 2	G1/4
Pneumatic connection 3	G1/4
Pneumatic connection 4	G1/4
Pneumatic connection 5	G1/4
Note on materials	RoHS-compliant
Actuator attachments material	Steel, galvanized
Cover material	PA-reinforced
Seals material	NBR
Housing material	Wrought aluminum alloy, anodized