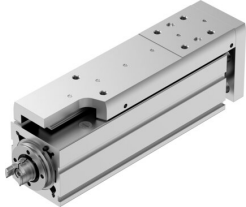


Mini slide EGSC-BS-KF-45-125-10P

Part number: 8048303

FESTO



 [General operating condition](#)

Data sheet

Feature	Value
Working stroke	125 mm
Size	45
Stroke reserve	0 mm
Reversing backlash	150 µm
Screw diameter	10 mm
Spindle pitch	10 mm/U
Mounting position	Any
Guide	Recirculating ball bearing guide
Structural design	with ball screw drive
Motor type	Stepper motor Servo motor
Homing	Fixed stop block positive Fixed stop block, negative Reference switch
Spindle type	Ball screw drive
Symbol	00992069
Position sensing	For proximity sensor
Max. acceleration	15 m/s ²
Max. rotational speed	3600 rpm
Max. speed	0.6 m/s
Repetition accuracy	±0.015 mm
Duty cycle	100%
Corrosion resistance class (CRC)	0 - No corrosion stress
LABS (PWIS) conformity	VDMA24364 zone III
Suitability for the production of Li-ion batteries	Suitable for battery production with reduced Cu/Zn/Ni values (F1a)
Cleanroom suitability, measured according to ISO 14644-14	Class 9 according to ISO 14644-1
Noise level	50 dB(A)
Degree of protection	IP40
Ambient temperature	0 °C ... 50 °C
Impact energy in the end positions	1.4E-5 J
Note on the impact energy in the end positions	At maximum speed of the reference run of 0.01 m/s
Fixed bearing dynamic basic load rating	7413 N
Linear guide dynamic basic load rating	3240 N
Dynamic basic load rating, ball screw drive	3200 N
No-load torque at maximum travel speed	0.1 Nm
No-load torque at minimum travel speed	0.03 Nm

Feature	Value
Max. force Fy	1314 N
Max. force Fz	1314 N
Fy with theoretical service life of 100 km (from a guide perspective only)	3240 N
Fz with theoretical service life of 100 km (from a guide perspective only)	3240 N
Max. torque Mx	8.1 Nm
Max. torque My	7 Nm
Max. torque Mz	7 Nm
Mx with theoretical service life of 100 km (from a guide perspective only)	20 Nm
My with theoretical service life of 100 km (from a guide perspective only)	17 Nm
Mz with theoretical service life of 100 km (from a guide perspective only)	17 Nm
Max. radial force on actuator shaft	180 N
Max. feed force Fx	120 N
Guide value for payload, horizontal	12 kg
Guide value for payload, vertical	12 kg
Ball screw drive statistical basic load rating	5900 N
Linear guide statistical basic load rating	5630 N
Mass moment of inertia JH per meter of stroke	0.13609 kgcm ²
Mass moment of inertia JL per kg of payload	0.02533 kgcm ²
Mass moment of inertia JO	0.01363 kgcm ²
Feed constant	10 mm/U
Statistical fixed bearing load rating	3966 N
Reference service life	5000 km
Maintenance interval	Life-time lubrication
Moving mass at 0 mm stroke	212 g
Additional moving mass per 10 mm stroke	30 g
Product weight	1394 g
Basic weight with 0 mm stroke	608 g
Additional weight per 10 mm stroke	63 g
Type of mounting	With internal thread With centering sleeve With accessories With cylindrical pin
Interface code, actuator	V32
Note on materials	RoHS-compliant
Slide carriage material	Roller bearing steel
Guide rail material	Roller bearing steel
Housing material	Wrought aluminum alloy, anodized
Material of yoke plate	Wrought aluminum alloy, anodized
Piston rod material	High-alloy stainless steel
Slide material	Wrought aluminum alloy, anodized
Ball screw nut material	Roller bearing steel
Spindle material	Roller bearing steel