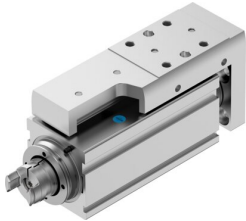


Mini slide EGSC-BS-KF-32-25-8P

Part number: 8048306

FESTO



 [General operating condition](#)

Data sheet

Feature	Value
Working stroke	25 mm
Size	32
Stroke reserve	0 mm
Reversing backlash	150 µm
Screw diameter	8 mm
Spindle pitch	8 mm/U
Mounting position	Any
Guide	Recirculating ball bearing guide
Structural design	with ball screw drive
Motor type	Stepper motor Servo motor
Homing	Fixed stop block positive Fixed stop block, negative Reference switch
Spindle type	Ball screw drive
Symbol	00992069
Position sensing	For proximity sensor
Max. acceleration	15 m/s ²
Max. rotational speed	3750 rpm
Max. speed	0.5 m/s
Repetition accuracy	±0.015 mm
Duty cycle	100%
Corrosion resistance class (CRC)	0 - No corrosion stress
LABS (PWIS) conformity	VDMA24364 zone III
Suitability for the production of Li-ion batteries	Suitable for battery production with reduced Cu/Zn/Ni values (F1a)
Cleanroom suitability, measured according to ISO 14644-14	Class 9 according to ISO 14644-1
Noise level	40 dB(A)
Degree of protection	IP40
Ambient temperature	0 °C ... 50 °C
Impact energy in the end positions	9.0E-6 J
Note on the impact energy in the end positions	At maximum speed of the reference run of 0.01 m/s
Fixed bearing dynamic basic load rating	3795 N
Linear guide dynamic basic load rating	2135 N
Dynamic basic load rating, ball screw drive	2000 N
No-load torque at maximum travel speed	0.042 Nm
No-load torque at minimum travel speed	0.025 Nm

Feature	Value
Max. force Fy	991 N
Max. force Fz	991 N
Fy with theoretical service life of 100 km (from a guide perspective only)	2135 N
Fz with theoretical service life of 100 km (from a guide perspective only)	2135 N
Max. torque Mx	3.4 Nm
Max. torque My	3.2 Nm
Max. torque Mz	3.2 Nm
Mx with theoretical service life of 100 km (from a guide perspective only)	10 Nm
My with theoretical service life of 100 km (from a guide perspective only)	7 Nm
Mz with theoretical service life of 100 km (from a guide perspective only)	7 Nm
Max. radial force on actuator shaft	75 N
Max. feed force Fx	60 N
Guide value for payload, horizontal	6 kg
Guide value for payload, vertical	6 kg
Ball screw drive statistical basic load rating	3700 N
Linear guide statistical basic load rating	3880 N
Mass moment of inertia JH per meter of stroke	0.04477 kgcm ²
Mass moment of inertia JL per kg of payload	0.01621 kgcm ²
Mass moment of inertia JO	0.00668 kgcm ²
Feed constant	8 mm/U
Statistical fixed bearing load rating	1792 N
Reference service life	5000 km
Maintenance interval	Life-time lubrication
Moving mass at 0 mm stroke	149 g
Additional moving mass per 10 mm stroke	12 g
Product weight	406 g
Basic weight with 0 mm stroke	331 g
Additional weight per 10 mm stroke	30 g
Type of mounting	With internal thread With centering sleeve With accessories With cylindrical pin
Interface code, actuator	V25
Note on materials	RoHS-compliant
Slide carriage material	Roller bearing steel
Guide rail material	Roller bearing steel
Housing material	Wrought aluminum alloy, anodized
Material of yoke plate	Wrought aluminum alloy
Piston rod material	High-alloy stainless steel
Slide material	Wrought aluminum alloy, anodized
Ball screw nut material	Roller bearing steel
Spindle material	Roller bearing steel