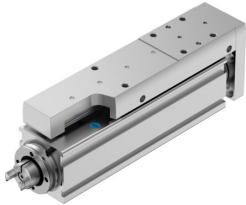


Mini slide EGSC-BS-KF-25-50-6P

Part number: 8048311

FESTO



[PDF](#) General operating condition

Data sheet

| Feature | Value |
|---|---|
| Working stroke | 50 mm |
| Size | 25 |
| Stroke reserve | 0 mm |
| Reversing backlash | 150 µm |
| Screw diameter | 6 mm |
| Spindle pitch | 6 mm/U |
| Mounting position | Any |
| Guide | Recirculating ball bearing guide |
| Structural design | with ball screw drive |
| Motor type | Stepper motor Servo motor |
| Homing | Fixed stop block positive Fixed stop block, negative Reference switch |
| Spindle type | Ball screw drive |
| Symbol | 00992069 |
| Position sensing | For proximity sensor |
| Max. acceleration | 15 m/s ² |
| Max. rotational speed | 4000 rpm |
| Max. speed | 0.4 m/s |
| Repetition accuracy | ±0.015 mm |
| Duty cycle | 100% |
| Corrosion resistance class (CRC) | 0 - No corrosion stress |
| LABS (PWIS) conformity | VDMA24364 zone III |
| Suitability for the production of Li-ion batteries | Suitable for battery production with reduced Cu/Zn/Ni values (F1a) |
| Cleanroom suitability, measured according to ISO 14644-14 | Class 9 according to ISO 14644-1 |
| Noise level | 50 dB(A) |
| Degree of protection | IP40 |
| Ambient temperature | 0 °C ... 50 °C |
| Impact energy in the end positions | 5.0E-6 J |
| Note on the impact energy in the end positions | At maximum speed of the reference run of 0.01 m/s |
| Fixed bearing dynamic basic load rating | 2810 N |
| Linear guide dynamic basic load rating | 1310 N |
| Dynamic basic load rating, ball screw drive | 1700 N |
| No-load torque at maximum travel speed | 0.029 Nm |
| No-load torque at minimum travel speed | 0.015 Nm |

| Feature | Value |
|--|---|
| Max. force Fy | 669 N |
| Max. force Fz | 669 N |
| Fy with theoretical service life of 100 km (from a guide perspective only) | 1310 N |
| Fz with theoretical service life of 100 km (from a guide perspective only) | 1310 N |
| Max. torque Mx | 2 Nm |
| Max. torque My | 2.1 Nm |
| Max. torque Mz | 2.1 Nm |
| Mx with theoretical service life of 100 km (from a guide perspective only) | 5 Nm |
| My with theoretical service life of 100 km (from a guide perspective only) | 4 Nm |
| Mz with theoretical service life of 100 km (from a guide perspective only) | 4 Nm |
| Max. radial force on actuator shaft | 30 N |
| Max. feed force Fx | 20 N |
| Guide value for payload, horizontal | 2 kg |
| Guide value for payload, vertical | 2 kg |
| Ball screw drive statistical basic load rating | 2600 N |
| Linear guide statistical basic load rating | 2440 N |
| Mass moment of inertia JH per meter of stroke | 0.01507 kgcm ² |
| Mass moment of inertia JL per kg of payload | 0.00912 kgcm ² |
| Mass moment of inertia JO | 0.00144 kgcm ² |
| Feed constant | 6 mm/U |
| Statistical fixed bearing load rating | 1340 N |
| Reference service life | 5000 km |
| Maintenance interval | Life-time lubrication |
| Moving mass at 0 mm stroke | 83 g |
| Additional moving mass per 10 mm stroke | 9 g |
| Product weight | 269 g |
| Basic weight with 0 mm stroke | 176 g |
| Additional weight per 10 mm stroke | 19 g |
| Type of mounting | With internal thread With centering sleeve With accessories With cylindrical pin |
| Interface code, actuator | V20 |
| Note on materials | RoHS-compliant |
| Slide carriage material | Roller bearing steel |
| Guide rail material | Roller bearing steel |
| Housing material | Wrought aluminum alloy, anodized |
| Material of yoke plate | Wrought aluminum alloy, anodized |
| Piston rod material | High-alloy stainless steel |
| Slide material | Wrought aluminum alloy, anodized |
| Ball screw nut material | Roller bearing steel |
| Spindle material | Roller bearing steel |