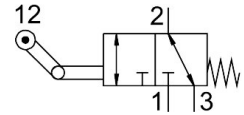


# Roller lever valve VMEF-KT-M32-M-G18

Part number: 8049241

FESTO



General operating condition

## Data sheet

| Feature   | Value  |
|---|--|
| Valve function                                    | 3/2, monostable  |
| Actuation type                                    | Mechanical   |
| Width   | 20 mm  |
| Normal nominal flow rate (normalized to DIN 1343) | 750 l/min  |
| Pneumatic working port                            | G1/8   |
| Operating pressure                                | -0.095 MPa ... 1 MPa   |
| Operating pressure                                | -0.95 bar ... 10 bar   |
| Structural design                                 | One-way roller lever<br>Plate seat                                 |
| Reset method                                      | Mechanical spring  |
| Max. stroke limit (hard)                          | 11 mm  |
| Nominal width                                     | 5.6 mm   |
| Application note                                  | Risk of pinching   |
| Sealing principle                                 | Soft   |
| Mounting position                                 | Any  |
| Type of control                                   | Direct   |
| Flow direction                                    | Reversible   |
| Symbol  | 00991348   |
| Lap   | Zero overlap   |
| Max. actuating speed with lateral actuation       | 0.7 m/s  |
| Max. switching frequency                          | 3 Hz   |
| Cam angle   | 30 deg   |
| Explosion prevention and protection               | Zone 1 (ATEX)<br>Zone 2 (ATEX)<br>Zone 21 (ATEX)<br>Zone 22 (ATEX) |
| Operating medium                                  | Compressed air as per ISO 8573-1:2010 [7:-:-]                      |
| Information on operating and pilot media          | Operation with oil lubrication possible (required for further use) |
| Corrosion resistance class (CRC)                  | 1 - Low corrosion stress   |
| LABS (PWIS) conformity                            | VDMA24364-B1/B2-L  |
| Temperature of medium                             | -10 °C ... 60 °C   |
| Ambient temperature                               | -10 °C ... 60 °C   |
| Note on ambient temperature                       | Influence of heat on wear  |
| Actuating force                                   | 32.7 N   |
| Product weight                                    | 227 g  |
| Type of mounting                                  | With through-hole  |
| Pneumatic connection 1                            | G1/8   |

| <b>Feature</b>                | <b>Value</b>                     |
|-------------------------------|----------------------------------|
| Pneumatic connection 2        | G1/8                             |
| Pneumatic connection 3        | G1/8                             |
| Note on materials             | RoHS-compliant                   |
| Actuator attachments material | Steel, galvanized                |
| Seals material                | NBR                              |
| Housing material              | Wrought aluminum alloy, anodized |