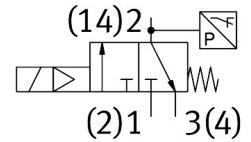
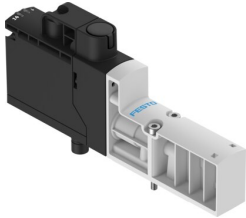


Air solenoid valve

VSVA-BT-M32CS2-MS-A2-1T5L-PA

FESTO

Part number: 8066575



[PDF](#) General operating condition

Data sheet

Feature	Value
Valve function	3/2, closed, monostable
Actuation type	Electrical
Width	18 mm
Normal nominal flow rate (normalized to DIN 1343)	125 l/min
Standard nominal flow rate exhaust air	125 l/min
Operating pressure	0.3 MPa ... 1 MPa
Operating pressure	3 bar ... 10 bar
Structural design	Plate seat
Reset method	Mechanical spring Pneumatic spring
Degree of protection	IP65
Sealing principle	Soft
Mounting position	Any
Manual override	None
Type of control	Pilot-controlled
Pilot air supply port	Internal
Flow direction	Non-reversible
Symbol	00997596
Lap	Underlap
Additional functions	Holding current reduction
Signal status display	Yellow LED, valve control Green LED, pressure switch, exhausted status
Switching position sensing	Via pressure switch, exhausted status
Duty cycle	100%
Max. positive test pulse with 0 signal	2000 µs
Max. negative test pulse on 1 signal	1200 µs
Nominal pick-up current per solenoid coil	60 mA up to 35 ms
Nominal operating voltage DC	24 V
Nominal current with current reduction	11 mA after 35 ms
Coil characteristics	24 V DC: 1.6 W
Permissible voltage fluctuations	+/- 10 %
Operating medium	Compressed air as per ISO 8573-1:2010 [7:4:4]
Information on operating and pilot media	Operation with oil lubrication not possible
Vibration resistance	Transport application test with severity level 2 as per FN 942017-4 and EN 60068-2-6
Shock resistance	Shock test with severity level 2 as per FN 942017-5 and EN 60068-2-27

Feature	Value
Corrosion resistance class (CRC)	0 - No corrosion stress
LABS (PWIS) conformity	VDMA24364-B1/B2-L
Temperature of medium	-5 °C ... 50 °C
Pilot medium	Compressed air as per ISO 8573-1:2010 [7:4:4]
Ambient temperature	-5 °C ... 50 °C
MTTF, subcomponent	452 years, pressure switch
Product weight	110 g
Min. switch-off point	0.05 bar
Switch-on point	0.2 bar
Max. switch-on point	0.3 bar
Electrical connection	Plug-in
Type of mounting	On sub-base
Pneumatic connection 2	G1/8
Pneumatic connection 4	G1/8
Note on materials	RoHS-compliant
Seals material	HNBR NBR
Housing material	PA-reinforced
Material of screws	Steel, galvanized
Switching element function	N/C contact