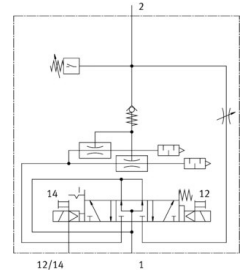
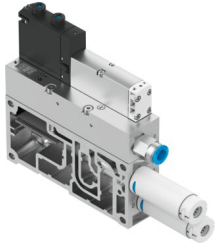


Vacuum generator VABF-S4-2-V2B1-G38-CB-VL-20-A

FESTO

Part number: 8067141



[General operating condition](#)

Data sheet

Feature	Value
Width	35 mm
Nominal width of Laval nozzle	2 mm
Muffler construction type	Open
Actuation type	Electrical
Reverse polarity protection	for all electrical connections
Mounting position	Any
Ejector characteristics	High suction rate Standard
Manual override	Detenting Non-detenting Covered
Measured variable	Relative pressure
Measuring principle	Piezoresistive
Switching function	Window comparator Threshold value comparator
Integrated function	Electric ejector pulse Flow control On/off valve, electric Air saving function, electrical Non-return valve Pneumatic muffler open Vacuum switch
Symbol	00995924
Valve function	5/3, pressurized
Display type	LED LED display 2-digit
Displayable unit(s)	kPa
Setting range threshold value	0 MPa ... 0.099 MPa
Setting range hysteresis	0 MPa ... 0.09 MPa
Setting options	Teach-in Via parameter sets
Signal status display	LED
Sensor switching status indication	LED
Operating pressure for max. suction rate	5 bar

Feature	Value
Operating pressure	4 bar ... 8 bar
Nominal operating pressure	6 bar
Pilot pressure	4 bar ... 10 bar
Max. suction rate with respect to atmosphere	179 l/min
Air supply time at nominal operating pressure	0.2 s
DC operating voltage range	21.6 V ... 30 V
Idle current	30 mA
Duty cycle	100%
Certification	RCM compliance mark
CE marking (see declaration of conformity)	As per EU EMC directive
Operating medium	Compressed air as per ISO 8573-1:2010 [7:4:4]
Information on operating and pilot media	Operation with oil lubrication not possible
Corrosion resistance class (CRC)	0 - No corrosion stress
LABS (PWIS) conformity	VDMA24364-B1/B2-L
Temperature of medium	-5 °C ... 50 °C
Noise level at nominal operating pressure	61 dB(A)
Degree of protection	IP65
Protection class	III
Ambient temperature	-5 °C ... 50 °C
Product weight	955 g
Pressure measuring range	-1 bar ... 0 bar
Display range start value	0 MPa
Display range end value	0.099 MPa
Accuracy in ± % FS	3 %FS
Reproducibility, switching value FS	1 %
Electrical actuation	Fieldbus
Electrical connection	Via CPX
Pneumatic connection 3	Pneumatic muffler open
Vacuum connection	G3/8
Note on materials	RoHS-compliant
Seals material	HNBR NBR
Female nozzle material	POM
Housing material	Wrought aluminum alloy
Plate material	Die-cast aluminum
Material of adjusting screw	High-alloy stainless steel
Muffler material	POM PU foam
Material of screws	Steel
Material of jet nozzle	Wrought aluminum alloy