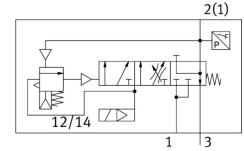


Soft-start valve VABF-S6-1-P5A4S2S-G12-1T5-PA

Part number: 8067409

FESTO



General operating condition

Data sheet

Feature	Value
Max. positive test pulse with 0 signal	2000 µs
Max. negative test pulse on 1 signal	1200 µs
Width	40 mm
Length	155 mm
Width dimension	41 mm
Valve size	40 mm
Vibration resistance	Transport application test with severity level 2 as per FN 942017-4 and EN 60068-2-6
Shock resistance	Shock test with severity level 2 as per FN 942017-5 and EN 60068-2-27
Actuation type	Electrical
Sealing principle	Soft
Mounting position	Any
Manual override	None
Structural design	Piston gate valve
Reset method	Mechanical spring
Type of control	Pilot-controlled
Pilot air supply port	Internal
Flow direction	Non-reversible
Symbol	00997591
Valve function	Pressure build-up Exhaust
Switching element function	N/C contact
Lap	Underlap
Additional functions	Holding current reduction
Note on forced dynamization	Switching frequency at least once a month
Signal status display	Yellow LED, valve control Green LED, pressure switch, exhausted status
Switching position sensing	Via pressure switch, exhausted status
Operating pressure	0.2 MPa ... 1 MPa
Operating pressure	2 bar ... 10 bar
Pilot pressure MPa	0.2 MPa ... 1 MPa
Pilot pressure	2 bar ... 10 bar
Changeover pressure	Not adjustable Switching point between 50 - 75% of operating pressure
Suitability for vacuum	no
Standard nominal flow rate pressurization	3000 l/min

Feature	Value
Note on standard nominal flow rate, pressurization	MPA: 1200 l/min VTSA: 3000 l/min
Standard nominal flow rate exhaust air	3300 l/min
Note on standard nominal flow rate, exhaust air	MPA: 1600 l/min VTSA: 3300 l/min
Duty cycle	100%
Nominal pick-up current per solenoid coil	60 mA up to 35 ms
Nominal operating voltage DC	24 V
Nominal current with current reduction	11 mA after 35 ms
Coil characteristics	24 V DC: 1.6 W
Permissible voltage fluctuations	+/- 10 %
Operating medium	Compressed air as per ISO 8573-1:2010 [7:4:4]
Information on operating and pilot media	Operation with oil lubrication not possible
Corrosion resistance class (CRC)	0 - No corrosion stress
LABS (PWIS) conformity	VDMA24364-B1/B2-L
Storage temperature	-20 °C ... 60 °C
Temperature of medium	-5 °C ... 50 °C
Relative air humidity	Max. 90 % at 40 °C
Degree of protection	IP65
Pilot medium	Compressed air as per ISO 8573-1:2010 [7:4:4]
Ambient temperature	-5 °C ... 50 °C
MTTF, subcomponent	452 years, pressure switch
Product weight	466 g
Min. switch-off point	0.05 bar
Switch-on point	0.2 bar
Max. switch-on point	0.3 bar
Electrical actuation	Fieldbus
Electrical connection	Plug-in
Type of mounting	On sub-base
Pneumatic connection 3	G1/2
Note on materials	RoHS-compliant
Seals material	HNBR NBR
Housing material	Wrought aluminum alloy
Material of screws	Steel, galvanized