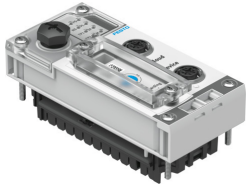


# Gateway CPX-IOT

Part number: 8069773

FESTO



 General operating condition

## Data sheet

Feature	Value
Dimensions W x L x H	50 mm x 107 mm x 50 mm
Width dimension	50 mm
Type of mounting	With H-rail
Product weight	130 g
Ambient temperature	-5 °C ... 50 °C
Storage temperature	-20 °C ... 70 °C
Relative air humidity	95 % Non-condensing
Degree of protection	IP65 IP67
Corrosion resistance class (CRC)	0 - No corrosion stress
Vibration resistance	Transport application test with severity level 1 as per FN 942017-4 and EN 60068-2-6
Shock resistance	Shock test with severity level 1 as per FN 942017-5 and EN 60068-2-27
Protection against direct and indirect contact	PELV
LABS (PWIS) conformity	VDMA24364-B2-L
CE marking (see declaration of conformity)	As per EU EMC directive
Note on materials	RoHS-compliant
Housing material	PA
Diagnostics via LED	Modify Module location Network status Network status, port 1 Network status, port 2 Power supply for electronics/sensors Load power supply System fault Connection to the cloud
Control elements	DIP switch for resetting to delivery state Rotary switch for setting mode of operation
IP address setting	DHCP Statically via web server
Fieldbus interface, protocol	Ethernet OPC-UA
Fieldbus interface, function	Bus connection to ethernet-based devices by Festo
Fieldbus interface, connection type	Socket
Fieldbus interface, connection technology	M12x1, D-coded as per EN 61076-2-101
Fieldbus interface, connection pattern	00995716
Fieldbus interface, number of poles/wires	4
Fieldbus interface, galvanic isolation	yes

Feature	Value
Fieldbus interface, transmission rate	100 Mbit/s
Ethernet interface, connection type	Socket
Ethernet interface, protocol	TCP/IP
Ethernet interface, function	Connection to MQTT broker
Ethernet interface, connection technology	M12x1, D-coded as per EN 61076-2-101
Ethernet interface, connection pattern	00995716
Ethernet interface, number of poles/wires	4
Ethernet interface, transmission rate	10 Mbit/s 100 Mbit/s
Configuration support	Integrated web server
CPU data	256 MB RAM Dual core 533 MHz
Nominal operating voltage DC for electronics/sensors	24 V
Permissible voltage fluctuations for electronics/sensors	± 25 %
Intrinsic current consumption at nominal operating voltage for electronics/sensors	Typically 80 mA
Power failure buffering	10 ms