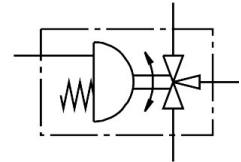


Ball valve actuator unit VZBM-A-1/2"-RP-25-F-3L-B2-PB20

Part number: 8070268

FESTO



 General operating condition

Data sheet

Feature	Value
Structural design	Quarter turn actuator
Actuation type	Pneumatic
Mounting position	Any
Type of mounting	Line installation
Fitting connection	Rp1/2
Switching position indication	Slot direction = flow direction
Nominal width DN	15
Operating pressure	5.5 bar ... 8 bar
Nominal pressure of fitting PN	25
Symbol	00995330
Medium	Compressed air as per ISO 8573-1:2010 [-:--] Inert gas Water – no water vapor Neutral liquids
Operating medium	Compressed air as per ISO 8573-1:2010 [7:4:4]
Information on operating and pilot media	Dew point min. 10 °C below the ambient temperature and temperature of medium Operation with oil lubrication possible (required for further use)
Temperature of medium	-20 °C ... 130 °C
Ambient temperature	-20 °C ... 80 °C
Flow rate Kv type L	17 m ³ /h
Note on materials	RoHS-compliant
LABS (PWIS) conformity	VDMA24364 zone III
Housing material	Brass, nickel-plated
Material number of housing	CW617N
Seals material	HNBR PTFE
Ball material	Brass, chrome-plated
Material number for ball	CW614N
Shaft material	Brass
Material number for shaft	CW614N
Product weight	1887 g
Corrosion resistance class (CRC)	1 - Low corrosion stress