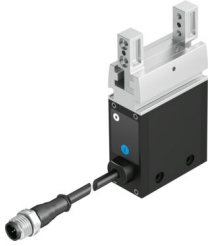


# Parallel gripper EHPS-16-A

Part number: 8070832

FESTO



 [General operating condition](#)

## Data sheet

Feature	Value
Size	16
Stroke per gripper jaw	10 mm
Max. interchangeability	≤0.2 mm
Max. gripper jaw angular play ax, ay	0.4 deg
Max. gripper jaw backlash Sz	0.05 mm
Rotational symmetry	≤0.2 mm
Pneumatic gripper repetition accuracy	≤0.03 mm
Number of gripper jaws	2
Actuator system	Electrical
Mounting position	Any
Gripper function	Parallel
Structural design	Worm gear T-shape Gear rack/pinion Electric gripper
Conforms to standard	IEC 61010-1
Guide	Sliding guide
Position sensing	For proximity sensor
Symbol	00992258
Motor type	DC servo motor
Control elements	Latching switch
Ready status indication	LED
Max. cycle rate	1.1 Hz
Max. mass per external gripper finger	100 g
Max. current consumption	1000 mA
Nominal operating voltage DC	24 V
Permissible voltage fluctuations	+/- 10 %
Certification	RCM compliance mark
KC characters	KC EMC
CE marking (see declaration of conformity)	As per EU EMC directive As per EU RoHS directive
UKCA marking (see declaration of conformity)	To UK RoHS instructions
Corrosion resistance class (CRC)	1 - Low corrosion stress
LABS (PWIS) conformity	VDMA24364-B2-L
Suitability for the production of Li-ion batteries	Metals with more than 5% by mass of copper are excluded from use. This excludes printed circuit boards, cables, electrical connectors and coils.

Feature	Value
Noise level	≤70 dB(A)
Degree of protection	IP40
Ambient temperature	5 °C ... 60 °C
Total gripping force	154 N
Mass moment of inertia	0.78 kgcm <sup>2</sup>
Maximum force on gripper jaw Fz, static	200 N
Maximum torque on gripper jaw, Mx static	7 Nm
Maximum torque on gripper jaw, My static	4.4 Nm
Maximum torque on gripper jaw, Mz static	7 Nm
Relubrication interval for guidance elements	2 MioCyc
Product weight	296 g
Electrical connection	5-pin Cable with plug M12x1
Type of mounting	Optionally: With internal thread and centering sleeve Via through-hole and centering sleeve
Note on materials	RoHS-compliant
Housing material	Aluminum, anodized
Gripper jaw material	High-alloy stainless steel