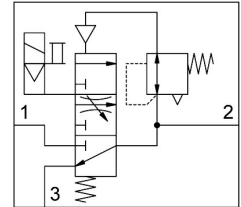



Soft-start valve MS4-EDE-1/4-V24-B

Part number: 8080815

FESTO



 General operating condition

Data sheet

Feature	Value
Size	4
Width dimension	40 mm
Exhaust air function	Without flow control option
Actuation type	Electrical
Mounting position	Any
Selection of additional function	with muffler
Series	MS
Manual override	Detenting Non-detenting
Structural design	Poppet valve, electrically actuated
Reset method	Mechanical spring
Type of control	Pilot-controlled
Pilot air supply port	Internal
Symbol	00997398
Valve function	3/2, closed, monostable
Lap	Underlap
Switching position indication	with accessories
Operating pressure	0.3 MPa ... 0.7 MPa
Operating pressure	3 bar ... 7 bar
b-value	0.45
C value	8.52 l/sbar
Standard flow rate exhaust 6-> 0 bar	1600 l/min
Normal nominal flow rate (normalized to DIN 1343)	2000 l/min
On time	31 ms
Coil characteristics	24 V DC: 2.3 W
Permissible voltage fluctuations	+/- 10 %
Operating medium	Compressed air as per ISO 8573-1:2010 [7:4:4]
Information on operating and pilot media	Operation with oil lubrication possible (required for further use)
Corrosion resistance class (CRC)	1 - Low corrosion stress
LABS (PWIS) conformity	VDMA24364-B1/B2-L
Cleanroom suitability, measured according to ISO 14644-14	Class 7 according to ISO 14644-1
Storage temperature	-10 °C ... 60 °C
Temperature of medium	-5 °C ... 50 °C
Degree of protection	IP65

Feature	Value
Ambient temperature	-5 °C ... 50 °C
Product weight	196 g
Electrical connection	Form C as per EN 175301-803
Signal status display	With accessories
Type of mounting	With wall/surface bracket
Pneumatic connection 1	G1/4
Pneumatic connection 2	G1/4
Pneumatic connection 3	G1/4
Note on materials	RoHS-compliant
Seals material	HNBR NBR
Housing material	PA-reinforced