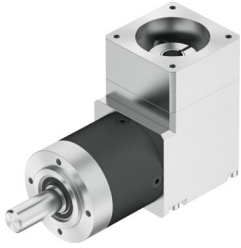


Gear unit EMGA-40-A-G3-40P

Part number: 8085342

FESTO



 [General operating condition](#)

Data sheet

Feature	Value
Gearbox flange size	40 mm
Motor flange size	40 mm
Torsional backlash	0.35 deg
Gearbox type	Angular gear
Gear ratio	3:1
Max. actuator speed	18000 rpm
Gearbox operating temperature	-25 °C ... 90 °C
LABS (PWIS) conformity	VDMA24364-B2-L
Degree of protection	IP54
Continuous output torque	4.5 Nm
Mass moment of inertia, gearbox	0.049 kgcm ²
Max. output torque	7 Nm
Max. efficiency	95 %
Torsional rigidity	0.8 Nm/arcmin
Product weight	500 g
Permissible axial shaft load	200 N
Permissible radial shaft load	200 N
Gearbox interface, output shaft	40G
Gearbox interface, actuator	40P
Note on materials	RoHS-compliant