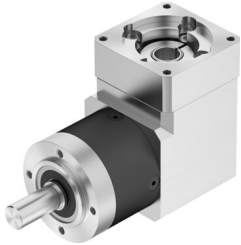


# Gear unit EMGA-60-A-G5-60P

Part number: 8085345

FESTO



 [General operating condition](#)

## Data sheet

Feature	Value
Gearbox flange size	60 mm
Motor flange size	60 mm
Torsional backlash	0.27 deg
Gearbox type	Angular gear
Gear ratio	5:1
Max. actuator speed	13000 rpm
Gearbox operating temperature	-25 °C ... 90 °C
LABS (PWIS) conformity	VDMA24364-B2-L
Degree of protection	IP54
Continuous output torque	24 Nm
Mass moment of inertia, gearbox	0.257 kgcm <sup>2</sup>
Max. output torque	38 Nm
Max. efficiency	95 %
Torsional rigidity	1.9 Nm/arcmin
Product weight	1700 g
Permissible axial shaft load	500 N
Permissible radial shaft load	400 N
Gearbox interface, output shaft	60G
Gearbox interface, actuator	60P
Note on materials	RoHS-compliant