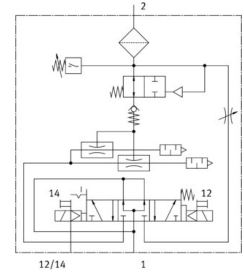
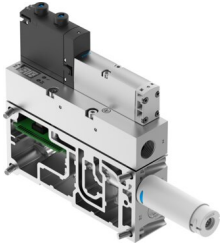



Vacuum generator VABF-S4-2-V2B1-G38-CB-VL-14-AP

Part number: 8088781

FESTO



 [General operating condition](#)

Data sheet

Feature	Value
Width	35 mm
Nominal width of Laval nozzle	1.4 mm
Muffler construction type	Open
Actuation type	Electrical
Reverse polarity protection	for all electrical connections
Mounting position	Any
Ejector characteristics	High suction rate Standard
Manual override	Detenting Non-detenting Covered
Measured variable	Relative pressure
Measuring principle	Piezoresistive
Switching function	Window comparator Threshold value comparator
Integrated function	Flow control On/off valve, electric Air saving function, electrical Power ejector pulse valve, electric Non-return valve Pneumatic muffler open Vacuum switch
Symbol	00995925
Valve function	5/3, pressurized
Display type	LED LED display 2-digit
Displayable unit(s)	kPa
Setting range threshold value	0 MPa ... 0.099 MPa
Setting range hysteresis	0 MPa ... 0.09 MPa
Setting options	Teach-in Via parameter sets
Signal status display	LED
Sensor switching status indication	LED
Operating pressure for max. suction rate	4 bar

Feature	Value
Operating pressure	4 bar ... 8 bar
Nominal operating pressure	6 bar
Pilot pressure	4 bar ... 10 bar
Max. suction rate with respect to atmosphere	91 l/min
Air supply time at nominal operating pressure	0.25 s
DC operating voltage range	21.6 V ... 30 V
Idle current	30 mA
Duty cycle	100%
Certification	RCM compliance mark
CE marking (see declaration of conformity)	As per EU EMC directive
Operating medium	Compressed air as per ISO 8573-1:2010 [7:4:4]
Information on operating and pilot media	Operation with oil lubrication not possible
Corrosion resistance class (CRC)	0 - No corrosion stress
LABS (PWIS) conformity	VDMA24364-B1/B2-L
Temperature of medium	-5 °C ... 50 °C
Noise level at nominal operating pressure	62 dB(A)
Degree of protection	IP65
Protection class	III
Ambient temperature	-5 °C ... 50 °C
Product weight	930 g
Pressure measuring range	-1 bar ... 0 bar
Display range start value	0 MPa
Display range end value	0.099 MPa
Accuracy in ± % FS	3 %FS
Reproducibility, switching value FS	1 %
Electrical actuation	Fieldbus
Electrical connection	Via CPX
Pneumatic connection 3	Pneumatic muffler open
Vacuum connection	G3/8
Note on materials	RoHS-compliant
Seals material	HNBR NBR
Female nozzle material	POM
Housing material	Wrought aluminum alloy
Plate material	Die-cast aluminum
Material of adjusting screw	High-alloy stainless steel
Muffler material	POM PU foam
Material of screws	Steel
Material of jet nozzle	Wrought aluminum alloy