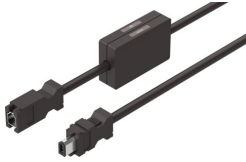


Adapter NEFM-REG6-K-0.5-B-REG6

Part number: 8097196

FESTO



 General operating condition

Data sheet

Feature	Value
Additional functions	for battery
Product weight	66 g
Electrical connection 1, function	Field device end
Electrical connection 1, design	Rectangular
Electrical connection 1, connection type	Socket
Electrical connection 1, cable outlet	Straight
Electrical connection 1, connection technology	Connection diagram RE
Electrical connection 1, number of pins/wires	6
Electrical connection 1, occupied pins/wires	6
Electrical connection for input 1, connection pattern	00995793
Electrical connection 2, function	Control side
Electrical connection 2, design	Rectangular
Electrical connection 2, connection type	Plug
Electrical connection 2, cable outlet	Straight
Electrical connection 2, connection technology	Connection diagram RE
Electrical connection 2, number of pins/wires	6
Electrical connection 2, occupied pins/wires	6
Electrical connection 2, connection pattern	00995792
DC operating voltage range	0 V ... 30 V
Operating voltage range AC	0 V ... 30 V
Current rating at 40° C	1.6 A
Surge resistance	2 kV
Shield	yes
Cable length	0.5 m
Cable characteristic	Standard
Connector cable test conditions	Test conditions on request
Bending radius, fixed cable installation	≥68 mm
Cable diameter	7.3 mm
Cable design	3 x (2 x 0.2 mm ²)
Nominal conductor cross section	0.2 mm ²
Nominal conductor cross section	AWG24
Degree of protection	IP20
Note on degree of protection	In mounted state
Ambient temperature	-40 °C ... 80 °C
CE marking (see declaration of conformity)	As per EU RoHS directive
UKCA marking (see declaration of conformity)	To UK RoHS instructions

Feature	Value
LABS (PWIS) conformity	VDMA24364 zone III
Note on materials	RoHS-compliant
Contamination level	3
Corrosion resistance class (CRC)	0 - No corrosion stress
Material of cable sheath	PVC
Color cable sheath	Black
Housing material	PVC
Housing colour	Gray
Insulating sheath material	PVC