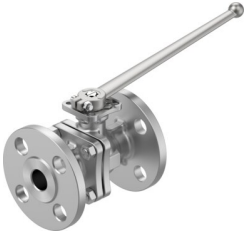


# Ball valve

## VZBF-3/4-P1-20-D-2-F0304-M-V15V15

Part number: 8097468

FESTO



[PDF](#) General operating condition

## Data sheet

Feature	Value
Structural design	2-way ball valve
Actuation type	Mechanical
Sealing principle	Soft
Mounting position	Any
Type of mounting	Line installation
Fitting connection	Flange as per ANSI B16.5 class 150
Switching position indication	Slot direction = flow direction
Flange hole pattern	F0304
Inside diameter	20 mm
Nominal width DN	20
Valve function	2/2
Flow direction	Reversible
Nominal pressure of fitting PN	20
Breakaway torque at differential pressure, nominal pressure, fitting PN	10 Nm
Based on norm	ISO 5211
Symbol	00991458
Medium	Vapor Compressed air as per ISO 8573-1:2010 [:-:-] Inert gas Water Neutral liquids
Temperature of medium	-20 °C ... 200 °C
Flow rate Kv	59 m <sup>3</sup> /h
Note on materials	RoHS-compliant
LABS (PWIS) conformity	VDMA24364 zone III
Housing material	Cast stainless steel
Material number of housing	1.4408
Seat seal material	PTFE PTFE, modified

<b>Feature</b>	<b>Value</b>
Seals material	FPM Graphite PCTFE PTFE
Ball material	Cast stainless steel
Material number for ball	1.4408
Shaft material	High-alloy stainless steel
Material number for shaft	1.4401
Product weight	2100 g
Certification	API607 CRN
Explosion prevention and protection	Zone 1 (ATEX) Zone 2 (ATEX) Zone 21 (ATEX) Zone 22 (ATEX)
Corrosion resistance class (CRC)	4 - Particularly high corrosion stress