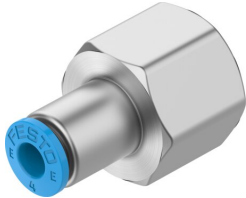


Push-in fitting NPQE-D-G14F-Q4-P10

Part number: 8112990

FESTO



 General operating condition

Data sheet

Feature	Value
Size	Standard
Nominal width	2.5 mm
Mounting position	Any
Design	Straight design
Pack size	10
Structural design	Push-pull principle
Operating pressure for entire temperature range	-0.095 MPa ... 0.8 MPa
Operating pressure for entire temperature range	-0.95 bar ... 8 bar
Operating pressure for entire temperature range	-13.775 psi ... 116 psi
Operating medium	Compressed air as per ISO 8573-1:2010 [7:4:4]
Information on operating and pilot media	Lubricated operation possible
Corrosion resistance class (CRC)	1 - Low corrosion stress
LABS (PWIS) conformity	VDMA24364 Zone III
Cleanroom suitability, measured according to ISO 14644-14	Class 4 according to ISO 14644-1
Ambient temperature	-5 °C ... 60 °C
Product weight	22.8 g
Type of mounting	External hexagon SW17
Pneumatic connection 1	Internal thread G1/4
Pneumatic connection 2	for pneumatic tubing outside diameter 4 mm
Releasing ring color	Blue
Note on materials	RoHS compliant
Housing material	Brass, nickel-plated
Releasing ring material	POM
Material of tubing seal	NBR
Material of tube retaining claw	Stainless steel