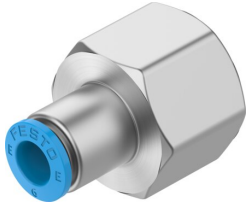


Push-in fitting NPQE-D-G38F-Q6-P5

Part number: 8112995

FESTO



 General operating condition

Data sheet

| Feature | Value |
|---|---|
| Size | Standard |
| Nominal width | 4.5 mm |
| Mounting position | Any |
| Design | Straight design |
| Pack size | 5 |
| Structural design | Push-pull principle |
| Operating pressure for entire temperature range | -0.095 MPa ... 0.8 MPa |
| Operating pressure for entire temperature range | -0.95 bar ... 8 bar |
| Operating pressure for entire temperature range | -13.775 psi ... 116 psi |
| Operating medium | Compressed air as per ISO 8573-1:2010 [7:4:4] |
| Information on operating and pilot media | Lubricated operation possible |
| Corrosion resistance class (CRC) | 1 - Low corrosion stress |
| LABS (PWIS) conformity | VDMA24364 Zone III |
| Cleanroom suitability, measured according to ISO 14644-14 | Class 4 according to ISO 14644-1 |
| Ambient temperature | -5 °C ... 60 °C |
| Product weight | 32.67 g |
| Type of mounting | External hexagon SW21 |
| Pneumatic connection 1 | Internal thread G3/8 |
| Pneumatic connection 2 | for pneumatic tubing outside diameter 6 mm |
| Releasing ring color | Blue |
| Note on materials | RoHS compliant |
| Housing material | Brass, nickel-plated |
| Releasing ring material | POM |
| Material of tubing seal | NBR |
| Material of tube retaining claw | Stainless steel |