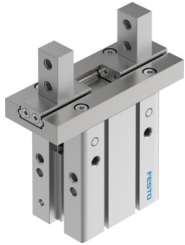


Parallel gripper DHPC-32-A-B

Part number: 8116884

FESTO



[PDF](#) General operating condition

Data sheet

Feature	Value
Size	32
Stroke per gripper jaw	11 mm
Max. interchangeability	0.2 mm
Max. gripper jaw angular play ax, ay	0 deg
Max. gripper jaw backlash Sz	0 mm
Rotational symmetry	≤0.2 mm
Pneumatic gripper repetition accuracy	≤0.02 mm
Number of gripper jaws	2
Actuator system	Pneumatic
Mounting position	Any
Mode of operation	Double-acting
Gripper function	Parallel
Gripping force backup	Without
Structural design	Connection direction downwards Lever Standard mounting type for gripper fingers Positively driven motion sequence
Guide	Ball guide
Position sensing	For proximity sensor
Symbol	00991894
Variants	Metals with copper, zinc or nickel by mass as main constituent are excluded from use. Exceptions are nickel in steel, chemically nickel-plated surfaces, printed circuit boards, cables, electrical plug connectors and coils.
Operating pressure	0.1 MPa ... 0.8 MPa
Operating pressure	1 bar ... 8 bar
Operating pressure	14.5 psi ... 116 psi
Max. operating frequency of pneumatic gripper	1 Hz
Min. opening time at 6 bar	114 ms
Min. closing time at 6 bar	107 ms
Max. mass per external gripper finger	280 g
Operating medium	Compressed air as per ISO 8573-1:2010 [7:4:4]
Information on operating and pilot media	Operation with oil lubrication possible (required for further use)
Corrosion resistance class (CRC)	0 - No corrosion stress
LABS (PWIS) conformity	VDMA24364-B2-L
Suitability for the production of Li-ion batteries	Suitable for battery production with reduced Cu/Zn/Ni values (F1a)
Ambient temperature	-10 °C ... 60 °C

Feature	Value
Gripping force per gripper jaw at 6 bar, opening	493.7 N
Gripping force per gripper jaw at 6 bar, closing	442.6 N
Gripping force per gripper jaw at 6 bar, opening	246.9 N
Gripping force per gripper jaw at 6 bar, closing	221.3 N
Mass moment of inertia	5.55 kgcm ²
Maximum force on gripper jaw Fz, static	246.8 N
Maximum torque on gripper jaw, Mx static	10.9 Nm
Maximum torque on gripper jaw, My static	6.29 Nm
Maximum torque on gripper jaw, Mz static	6.29 Nm
Product weight	779 g
Type of mounting	Optionally: Direct mounting via through-hole Direct fastening via thread On mounting frame With through-hole and dowel pin With internal thread and dowel pin
Pneumatic connection	M5
Note on materials	RoHS-compliant
Housing material	Aluminum, anodized
Gripper jaw material	High-alloy stainless steel