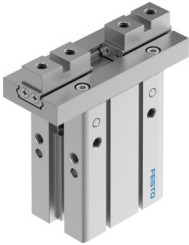


# Parallel gripper DHPC-32-A-NO-S-2

Part number: 8116889

FESTO



 [General operating condition](#)

## Data sheet

Feature	Value
Size	32
Stroke per gripper jaw	11 mm
Max. interchangeability	0.2 mm
Max. gripper jaw angular play ax, ay	0 deg
Max. gripper jaw backlash Sz	0 mm
Rotational symmetry	≤0.2 mm
Pneumatic gripper repetition accuracy	≤0.02 mm
Number of gripper jaws	2
Actuator system	Pneumatic
Mounting position	Any
Mode of operation	Single-acting Open
Gripper function	Parallel
Gripping force backup	On opening
Structural design	Connection direction at side Flat mounting type for gripper fingers Lever Positively driven motion sequence
Guide	Ball guide
Position sensing	For proximity sensor
Symbol	00997349
Operating pressure	0.25 MPa ... 0.8 MPa
Operating pressure	2.5 bar ... 8 bar
Operating pressure	36.25 psi ... 116 psi
Max. operating frequency of pneumatic gripper	1 Hz
Min. opening time at 6 bar	174 ms
Min. closing time at 6 bar	76 ms
Max. mass per external gripper finger	280 g
Operating medium	Compressed air as per ISO 8573-1:2010 [7:4:4]
Information on operating and pilot media	Operation with oil lubrication possible (required for further use)
Corrosion resistance class (CRC)	0 - No corrosion stress
LABS (PWIS) conformity	VDMA24364-B2-L
Suitability for the production of Li-ion batteries	Suitable for battery production with reduced Cu/Zn/Ni values (F1a)
Ambient temperature	-10 °C ... 60 °C
Gripping force per gripper jaw at 6 bar, closing	415.2 N
Gripping force per gripper jaw at 6 bar, closing	207.6 N

Feature	Value
Mass moment of inertia	5.73 kgcm <sup>2</sup>
Maximum force on gripper jaw Fz, static	246.8 N
Maximum torque on gripper jaw, Mx static	10.9 Nm
Maximum torque on gripper jaw, My static	6.29 Nm
Maximum torque on gripper jaw, Mz static	6.29 Nm
Product weight	826 g
Type of mounting	Optionally: Direct mounting via through-hole Direct fastening via thread On mounting frame With through-hole and dowel pin With internal thread and dowel pin
Pneumatic connection	M5
Note on materials	RoHS-compliant
Housing material	Aluminum, anodized
Gripper jaw material	High-alloy stainless steel