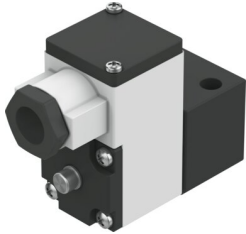


Pilot valve MGXIAH-3/2-0.8-24DC-KS

Part number: 8118341

FESTO



 [General operating condition](#)

Data sheet

Feature	Value
Valve function	3/2, closed, monostable
Actuation type	Electrical
Operating pressure	-0.09 MPa ... 0.8 MPa
Operating pressure	-0.9 bar ... 8 bar
Operating pressure	-13.05 psi ... 116 psi
Structural design	On/off valve
Reset method	Mechanical spring
Certificate issuing authority	21-GA4BO-0070X 21-GA4BO-0071X
Type of ignition protection for gas	Ex ia IIC T6...T5 Gb
Type of (ignition) protection for dust	Ex ia IIIC T135°C Db
Explosive ambient temperature	-40°C ≤ Ta ≤ 50°C/65°C
Degree of protection	IP65
Manual override	Detenting
Flow direction	Non-reversible
Symbol	00991308
Duty cycle	100%
Insulation class	H
Max. input power Pi	-55°C ~ +50°C T6 = 2.98W -55°C ~ +65°C T5 = 1W -55°C ~ +65°C T5 = 2.98W -55°C ~ +65°C T6 = 1W
Max. input voltage Vi	31 V
Max. input current Ii	0.67 A
Coil characteristics	24 V DC: 1.5 W
Effective internal inductance Li	Negligibly low
Effective internal capacitance Ci	Negligibly low
Permissible frequency fluctuations	+/- 10%
Operating medium	Compressed air as per ISO 8573-1:2010 [7:4:4]
Information on operating and pilot media	Operation with oil lubrication possible (required for further use)
Corrosion resistance class (CRC)	2 - Moderate corrosion stress
LABS (PWIS) conformity	VDMA24364 zone III
Ambient temperature	-20 °C ... 80 °C
Type of mounting	CNOMO
Note on materials	RoHS-compliant