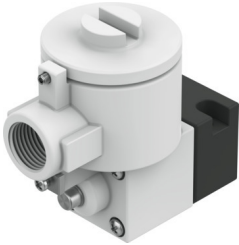


# Pilot valve MGXDH-3/2-1.2-24DC-KS

Part number: 8118342

FESTO



 [General operating condition](#)

## Data sheet

| Feature                                  | Value  |
|--|--|
| Valve function                           | 3/2, closed, monostable  |
| Actuation type                           | Electrical   |
| Operating pressure                       | -0.09 MPa ... 0.8 MPa  |
| Operating pressure                       | -0.9 bar ... 8 bar   |
| Operating pressure                       | -13.05 psi ... 116 psi   |
| Structural design                        | On/off valve   |
| Reset method                             | Mechanical spring  |
| Certificate issuing authority            | 21-GA4BO-0068X<br>21-GA4BO-0069X                                   |
| Type of ignition protection for gas      | Ex db IIC T6...T3 Gb   |
| Type of (ignition) protection for dust   | Ex tb IIIC T85°C Db  |
| Explosive ambient temperature            | -65°C ~+40°C T6<br>-65°C ~+55°C T5<br>-65°C ~+60°C T4              |
| Degree of protection                     | IP66   |
| Manual override                          | Detenting  |
| Flow direction                           | Non-reversible   |
| Symbol                                   | 00991308   |
| Duty cycle                               | 100%   |
| Insulation class                         | H  |
| Coil characteristics                     | 24 V DC: 3.0 W   |
| Permissible frequency fluctuations       | +/- 10%  |
| Operating medium                         | Compressed air as per ISO 8573-1:2010 [7:4:4]                      |
| Information on operating and pilot media | Operation with oil lubrication possible (required for further use) |
| Corrosion resistance class (CRC)         | 2 - Moderate corrosion stress                                      |
| LABS (PWIS) conformity                   | VDMA24364 zone III   |
| Ambient temperature                      | -20 °C ... 80 °C   |
| Type of mounting                         | CNOMO  |
| Note on materials                        | RoHS-compliant   |