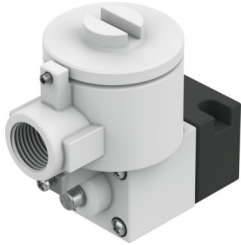


# Pilot valve MGXDH-3/2-1.2-230AC-KS

Part number: 8118344

FESTO



 [General operating condition](#)

## Data sheet

Feature	Value
Valve function	3/2, closed, monostable
Actuation type	Electrical
Operating pressure	-0.09 MPa ... 0.8 MPa
Operating pressure	-0.9 bar ... 8 bar
Operating pressure	-13.05 psi ... 116 psi
Structural design	On/off valve
Reset method	Mechanical spring
Certificate issuing authority	21-GA4BO-0068X 21-GA4BO-0069X
Type of ignition protection for gas	Ex db IIC T6...T3 Gb
Type of (ignition) protection for dust	Ex tb IIIC T85°C Db
Explosive ambient temperature	-65°C ~+40°C T4 -65°C ~+55°C T3
Degree of protection	IP66
Manual override	Detenting
Flow direction	Non-reversible
Symbol	00991308
Duty cycle	100%
Insulation class	H
Coil characteristics	230 V AC: 50/60 Hz, initial power 9.5 VA, holding power 6.0 VA
Permissible frequency fluctuations	+/- 10%
Operating medium	Compressed air as per ISO 8573-1:2010 [7:4:4]
Information on operating and pilot media	Operation with oil lubrication possible (required for further use)
Corrosion resistance class (CRC)	2 - Moderate corrosion stress
LABS (PWIS) conformity	VDMA24364 zone III
Ambient temperature	-20 °C ... 80 °C
Type of mounting	CNOMO
Note on materials	RoHS-compliant