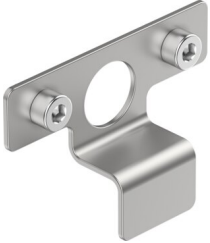


# Switch lug EAPM-L9-120-SLE

Part number: 8120124

FESTO



 [General operating condition](#)

## Data sheet

Feature	Value
Size	120
Mounting position	Any
Corrosion resistance class (CRC)	0 - No corrosion stress
LABS (PWIS) conformity	VDMA24364-B2-L
Ambient temperature	-10 °C ... 80 °C
Product weight	9 g
Note on materials	RoHS-compliant
Switch lug material	High-alloy steel