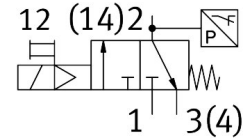
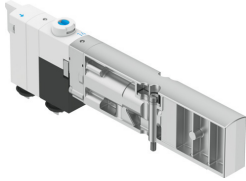


Solenoid valve VMPA1-M1H-IS-PI

Part number: 8126790

FESTO



[General operating condition](#)

Data sheet

Feature	Value
Valve function	3/2, closed, monostable
Actuation type	Electrical
Valve size	10 mm
Pneumatic working port	M7
Operating voltage	24V DC
Operating pressure	0.3 MPa ... 0.8 MPa
Operating pressure	3 bar ... 8 bar
Structural design	Poppet valve with return spring
Reset method	Mechanical spring
Degree of protection	IP65 In mounted state as per IEC 60529
Sealing principle	Soft
Mounting position	Any
Manual override	Detenting Non-detenting
Type of control	Pilot-controlled
Pilot air supply port	Internal
Flow direction	Non-reversible
Symbol	00997584
Lap	Underlap
Signal status display	yes
Pilot pressure MPa	0.3 MPa ... 0.8 MPa
Pilot pressure	3 bar ... 8 bar
Suitability for vacuum	no
Permissible voltage fluctuations	+/- 25 %
Operating medium	Compressed air as per ISO 8573-1:2010 [7:4:4]
Information on operating and pilot media	Operation with oil lubrication not possible
Vibration resistance	Transport application test with severity level 2 as per FN 942017-4 and EN 60068-2-6
Shock resistance	Shock test with severity level 2 as per FN 942017-5 and EN 60068-2-27
Corrosion resistance class (CRC)	1 - Low corrosion stress
LABS (PWIS) conformity	VDMA24364 zone III
Storage temperature	-20 °C ... 60 °C
Temperature of medium	-5 °C ... 50 °C
Relative air humidity	Max. 90 % at 40 °C

Feature	Value
Ambient temperature	-5 °C ... 50 °C
Max. tightening torque for valve mounting	0.25 Nm
Product weight	32 g
Min. switch-off point	0.05 bar
Switch-on point	0.2 bar
Max. switch-on point	0.3 bar
Type of mounting	With through-hole
Pilot exhaust air port 82/84	Internal
Pneumatic connection 1	Internal
Pneumatic connection 2	Internal
Pneumatic connection 3	M7
Note on materials	RoHS-compliant
Seals material	HNBR NBR
Housing material	PPA-reinforced
Material of screws	Steel, coated