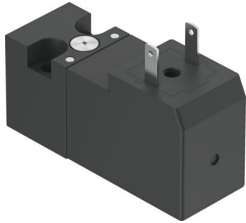


Solenoid valve

VSCS-B-M32-MH-WA-1E1-8

Part number: 8137327

FESTO



 [General operating condition](#)

Data sheet

Feature	Value
Valve function	3/2-way, closed, monostable
Actuation type	Electrical
Width	15 mm
Normal nominal flow rate (normalized to DIN 1343)	13.5 l/min
Pneumatic working port	Sub-base, size 15 mm according to ISO 15218
Operating voltage	24V DC
Operating pressure	0.15 MPa ... 0.8 MPa
Operating pressure	1.5 bar ... 8 bar
Operating pressure	21.75 psi ... 116 psi
Reset method	Mechanical spring
Degree of protection	IP65
Sealing principle	Soft
Mounting position	Any
Conforms to standard	ISO 15218
Manual override	Non-detenting
Type of control	directly
Flow direction	Non-reversible
Symbol	00991308
Lap	Negative overlap
Note on forced dynamization	Switching frequency at least once a week
Switching time off	6 ms
On switching time	8 ms
Duty cycle	100%
Coil characteristics	24 V DC: 1.3 W
Permissible voltage fluctuations	+/- 10%
Operating medium	Compressed air as per ISO 8573-1:2010 [7:4:4]
Information on operating and pilot media	Operation with oil lubrication possible (required for further use)
Vibration resistance	Transport application test with severity level 1 as per FN 942017-4 and EN 60068-2-6
Shock resistance	Shock test with severity level 1 as per FN 942017-5 and EN 60068-2-27
Corrosion resistance class (CRC)	2 - Moderate corrosion stress
LABS (PWIS) conformity	VDMA24364-C1-L
Temperature of medium	-5 °C ... 50 °C
Ambient temperature	-5 °C ... 50 °C
Electrical connection	Connection diagram form C as per industrial standard, 9.4 mm
Pneumatic connection 1	Sub-base

Feature	Value
Pneumatic connection 2	Sub-base
Pneumatic connection 3	Sub-base
Note on materials	RoHS compliant
Seals material	NBR