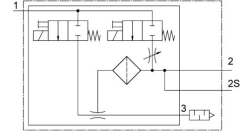
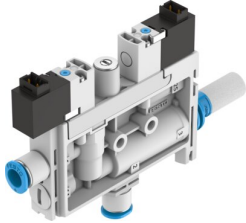


Vacuum generator OVEL-7-H-15-PQ-VQ4-UC-C-A-H3

Part number: 8141100

FESTO



 [General operating condition](#)

Data sheet

Feature	Value
Nominal width of Laval nozzle	0.7 mm
Width dimension	15 mm
Muffler construction type	Closed
Mounting position	Any
Ejector characteristics	High vacuum Standard
Grade of filtration	40 µm
Manual override	Non-detenting
Integrated function	Electric ejector pulse Flow control On/off valve, electric Filter Muffler, closed
Structural design	T-shape
Symbol	00995808
Valve function	Closed
Operating pressure for max. suction rate	0.4 MPa
Operating pressure for max. suction rate	4 bar
Operating pressure for max. suction rate	58 psi
Operating pressure	0.2 MPa ... 0.7 MPa
Operating pressure	2 bar ... 7 bar
Operating pressure	29 psi ... 101.5 psi
Operating pressure for max. vacuum	0.48 MPa
Operating pressure for max. vacuum	4.8 bar
Operating pressure for max. vacuum	69.6 psi
Max. vacuum	92 %
Nominal operating pressure	0.4 MPa
Nominal operating pressure	4 bar
Nominal operating pressure	58 psi
Max. suction rate with respect to atmosphere	17 l/min
Air supply time at nominal operating pressure with ejector pulse	1.2 s
DC operating voltage range	21.6 V ... 26.4 V
Duty cycle	100%
Coil characteristics	24 V DC: 1.0 W
Certification	c UL us - Listed (OL)
Operating medium	Compressed air as per ISO 8573-1:2010 [7:4:4]
Information on operating and pilot media	Operation with oil lubrication not possible

Feature	Value
Corrosion resistance class (CRC)	2 - Moderate corrosion stress
LABS (PWIS) conformity	VDMA24364-B1/B2-L
Temperature of medium	0 °C ... 50 °C
Noise level at nominal operating pressure	56 dB(A)
Degree of protection	IP40
Ambient temperature	0 °C ... 50 °C
Product weight	58 g
Electrical connection input, function	Ejector pulse Vacuum generator
Electrical connection input, connection type	2x plugs
Electrical input connection, connection technology	Connection diagram H
Electrical connection, input, number of pins/wires	2
Electrical connection for input, connection pattern	00995626
Electrical input connection, mounting type	Snap-locking
Type of mounting	With through-hole
Pneumatic connection 1	for pneumatic tubing outside diameter 4 mm
Pneumatic connection 3	Muffler, closed
Vacuum connection	For pneumatic tubing outside diameter 4 mm
Material of connecting thread	POM
Note on materials	RoHS-compliant
Seals material	NBR
Female nozzle material	POM
Compressed air filter material	POM
Housing material	PA-reinforced
Material of adjusting screw	Steel
Muffler material	PA-reinforced PE
Material of screws	Steel
Material of jet nozzle	Wrought aluminum alloy