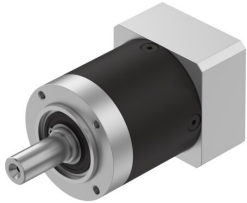


# Gear unit EMGA-60-P-G12-EAS-60

Part number: 8141736

FESTO



 [General operating condition](#)

## Data sheet

Feature	Value
Gearbox flange size	60 mm
Motor flange size	60 mm
Torsional backlash	0.2 deg
Gearbox type	Planetary gear
Gear ratio	12:1
Max. actuator speed	13000 rpm
Gearbox operating temperature	-25 °C ... 90 °C
LABS (PWIS) conformity	VDMA24364-B2-L
Degree of protection	IP54
Continuous output torque	44 Nm
Mass moment of inertia, gearbox	0.138 kgcm <sup>2</sup>
Max. output torque	70 Nm
Max. efficiency	96 %
Torsional rigidity	2.8 Nm/arcmin
Product weight	1100 g
Permissible axial shaft load	500 N
Permissible radial shaft load	400 N
Gearbox interface, output shaft	60H
Gearbox interface, actuator	60P
Note on materials	RoHS-compliant