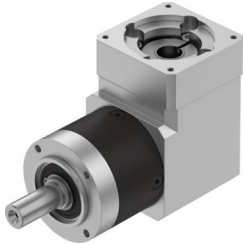


Gear unit EMGA-60-A-G8-60P

Part number: 8141738

FESTO



 [General operating condition](#)

Data sheet

Feature	Value
Gearbox flange size	60 mm
Motor flange size	60 mm
Torsional backlash	0.27 deg
Gearbox type	Angular gear
Gear ratio	8:1
Max. actuator speed	13000 rpm
Gearbox operating temperature	-25 °C ... 90 °C
LABS (PWIS) conformity	VDMA24364-B2-L
Degree of protection	IP54
Continuous output torque	18 Nm
Mass moment of inertia, gearbox	0.243 kgcm ²
Max. output torque	29 Nm
Max. efficiency	93 %
Torsional rigidity	1.6 Nm/arcmin
Product weight	1700 g
Permissible axial shaft load	500 N
Permissible radial shaft load	400 N
Gearbox interface, output shaft	60G
Gearbox interface, actuator	60P
Note on materials	RoHS-compliant