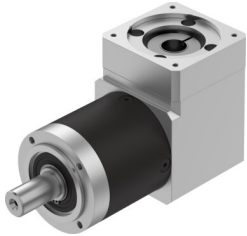


Gear unit EMGA-80-A-G12-80P

Part number: 8141745

FESTO



 [General operating condition](#)

Data sheet

Feature	Value
Gearbox flange size	80 mm
Motor flange size	80 mm
Torsional backlash	0.25 deg
Gearbox type	Angular gear
Gear ratio	12:1
Max. actuator speed	7000 rpm
Gearbox operating temperature	-25 °C ... 90 °C
LABS (PWIS) conformity	VDMA24364-B2-L
Degree of protection	IP54
Continuous output torque	120 Nm
Mass moment of inertia, gearbox	1.379 kgcm ²
Max. output torque	192 Nm
Max. efficiency	94 %
Torsional rigidity	5 Nm/arcmin
Product weight	5000 g
Permissible axial shaft load	1000 N
Permissible radial shaft load	750 N
Gearbox interface, output shaft	80G
Gearbox interface, actuator	80P
Note on materials	RoHS-compliant